



MOUNTVIEW

VIEW 2023
FESTIVAL

PROGRAMME



MOUNTVIEW
**VIEW
FESTIVAL**

2023

CONTENTS

[Introductions](#)

[Timetable](#)

SHOWS

[12](#)

[From Ten Feet Up](#)

[Kiss Her Goodbye](#)

[Rain Weaver](#)

[Rosaline](#)

[Shedding](#)

[Stick it to Me](#)

[What is Held](#)

[Events](#)

[VIEW Saturday](#)

[VIEW Online](#)

[Credits](#)

[About Mountview](#)



MOUNTVIEW
VIEW
FESTIVAL
2023
INTRODUCTIONS

Welcome to VIEW Festival 2023.

VIEW Festival 2023 is an exciting theatre festival showcasing the work of this year's MA Creative Producing cohort.

The festival celebrates a diverse offering of contemporary work and features many engaging events, including poetry, music, talks and games.

This year's festival includes a myriad of different, unique productions and events. It is the culmination of a year's work by the MA Creative Producing cohort 2022/2023 and a chance to showcase the talents of the next generation of producers.

Included in this programme is a deep dive into every production, producer, and event and why the producer felt a connection to their work.

This festival is an opportunity to celebrate the talent of writers, directors, actors, designers, composers and musical directors and showcase their work to a new audience.

VIEW Festival 2023 also presents VIEW Saturday and VIEW Online. See pages 23 and 25 for more information.

MOUNTVIEW

VIEW FESTIVAL

2023

INTRODUCTIONS

PAM FRASER SOLOMON HEAD OF CREATIVE PRODUCING

"It is a delight to see the Producers' Showcase taking over Mountview's Backstage Theatre again. This annual festival is always a feast of storytelling, brought to life by skillful producing. VIEW Festival 2023 is an opportunity for the Creative Producers to implement the range of skills that they have developed through their training at Mountview. This year's engaging productions and events display the pooling of diverse producing talent to create a lively theatre festival."



Image Credit: Sheila Burnett

An award-winning producer/director. Pam Fraser Solomon was a senior BBC Drama producer and has directed over a hundred hours of audio dramas.

Her television drama productions include producing EastEnders and Holby City and the Development Producer for the BBC short film One Night In White Satin. Pam is a documentary producer and was an executive producer of BBC2's award-winning Moira Stuart In Search of Wilberforce and a script editor for the autobiographical feature film Farming. Pam trained at Mountview and developed a career in fringe and repertory theatre working for venues including the Sheffield Crucible and Theatre Royal Stratford East. Pam is the Interim Chair of Eclipse Theatre Company and the Chair of Theatre Deli.



SALLY ANN GRITTON MOUNTVIEW PRINCIPAL

"Every year I look forward to the annual Producers' Festival as it is the perfect opportunity for the producers to gain real life experience in creating a theatre festival. For two weeks the producers get to take over the Backstage Theatre and present completely unique one-person shows. I am proud that we can offer this opportunity for the producers to display exemplary leadership and collaboration."

VIEW FESTIVAL

2023

TIMETABLE

KEY: ● Shows ○ Events
● Online ● Saturday

TUESDAY (4 July)

18:15	Kiss Her Goodbye	Backstage Theatre
19:45	Rain Weaver	Backstage Theatre

WEDNESDAY (5 July)

18:15	What Is Held	Backstage Theatre
19:45	Rosaline	Backstage Theatre

THURSDAY (6 July 12:00)

Until 10th July	Mothers as Makers - Podcast	Online
Until 10th July	The Power of One - Panel	Online
18:15	Stick it to Me	Backstage Theatre
19:45	Shedding	Backstage Theatre

FRIDAY (7 July)

18:15	From Ten Feet Up	Backstage Theatre
19:45	12	Backstage Theatre

SATURDAY (8 July)

10:00 - 22:00	VIEW Saturday	Mountview Building
Until 10th July	Filmed Performances	Online

12



Counting from 1-12 is the only thing that will save Mel's mother, cure mouth cancer, and stop the Earth from crashing into the Sun; according to Mel and her OCD. Mel tries to get through her day-to-day life working as a barista whilst her nosey regular – Marian – insists on being a constant in her life.

Until a sudden event forces Mel to confront her endless cycle of 1,2,3,4,5,6,7,8,9,10,11,12 and make her doubt everything.

DATES & TIMES

Friday 19:45

Saturday 10:30

A note from the producer...

The journey of 12 developed from an original 5-minute monologue piece that Martha had written named 'Dan Orfod'. I was drawn to the piece as it offered a lighter humored insight into those living with OCD and other mental health issues, which is something that is not often found in Welsh theatre.

CREATIVES



ALED ROSSER *(he/him)*

PRODUCER

Aled is a Welsh producer and fundraiser now based in London. His main passion is uplifting Welsh and Queer voices in traditional and non-traditional theatre settings. He is also interested in new writing and supporting new creatives and facilitating their vision into a reality whilst in their early careers. Credits include: eNBy City (Theatre Deli), Cwiar Na Nog (Eisteddfod yr Urdd), Site-Specific Theatre Practice Showcase (Mountview), Wales International Harp Festival (Canolfan Gerdd William Mathias), Llwyfan y Llannerch (National Eisteddfod) and Nyth (Frân Wen).

MARTHA IFAN *(she/her)*

WRITER

Martha is a writer from Carmarthen, West Wales. She currently lives in Cardiff, working as a Translator and Editor. In her writing, she's particularly interested in mental health and strives to portray it honestly and truthfully. Credits - Chwilio'r chwedl, 2023 - Urdd Gobaith Cymru & Theatr Genedlaethol Cymru, Ffosfforws, 2023 - Cyhoeddiadau'r Stamp, Eisteddfod yr Urdd, 2023 - Menter Iaith Sir Gaerfyrddin, Cynllun Artistiaid Newydd, 2022 - Frân Wen, Stori Nos Da Cyw, 2022 - Boom Plant & S4C, Stori Tic Toc Radio Series, 2021 - 2022 - Boom Plant & BBC Radio Cymru, Dan Orfod, 2021 - Urdd Gobaith Cymru & Theatr Genedlaethol Cymru & S4C, Adref, 2020 - Cylchgrawn Cara



GEORGIE HALFORD *(she/her)*

PERFORMER

Georgie Halford initially trained at Tring Park School for the Performing Arts, followed by London School of Dramatic Art, The Actors Class London, National Youth Theatre and National Youth Film Academy. Stage Credits include: South Kentish Town (Arcola Theatre), One Born Astride of A Grave (ACT Theatre), Talkabout (Riant Theatre/Rosemary Branch Theatre), The Phallic Earth Society (Old Red Lion Theatre), Blink (Lion and Unicorn Theatre/The Drayton Arms/New Wimbledon Theatre), Alternative Therapy (Theatro Technis), Epic Love and Pop Songs (New Wimbledon Theatre). Filming Credits include: Being Grace (Tapping Frog Productions), A Matter of Causality (Tapping Frog Productions), Who Made You Queen (Mavrik Productions), Ministry of Snitches (NYFA). Voice Over Credits include: Incanti (Almeida Associates), Rocketman (Paramount Pictures).

NATALYA MICIC *(she/her)*

DIRECTOR

Natalya trained at London School of Dramatic as an actor and now works as a director and photographer. She is soon to graduate from the Theatre Directing course at Mountview. Her directing credits include: Theatre – Seven, Savage Heart, A Final Act of Friendship, The Loudest Mind, Alternative Therapy, Seen and Not Heard, Chekhovian. Film – Screwdriver and Alright. Her Assistant Director credits include: Theatre – Bare: A Pop Opera, Epic Love and Pop Songs, Katzenmusik, Darknet, and Blink. Film – Bully.



LILLI FULLER *(they/them)*

DESIGNER

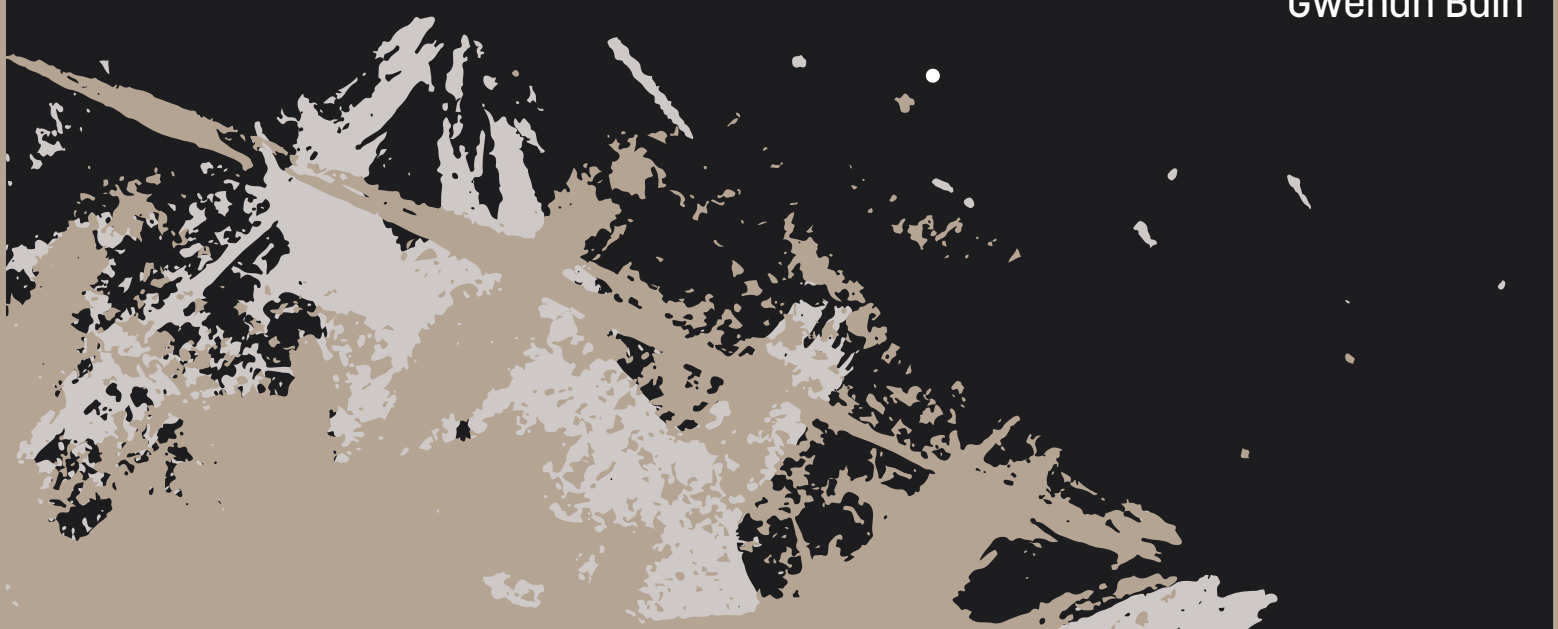
Lilli Fuller is a Queer Theatre Designer set out to create Joyful Art. Their design credits include In The Basement (The Glory, 2023), 10/10 Would Trans Again or Having Fun with Gender (The Golden Goose Theatre, 2023), All The Fraudulent Horse Girls (The Glory, 2022/2023), eNBy City (Theatre Deli, 2022) and Remote (The Southwark Playhouse, 2022). They also have experience as Design Assistant on Mountview's production of Disney's The Little Mermaid (The Mack, 2023), Set Build Assistant on the award winning FortLondon 2023 Trans Nude Calendar and Set Dresser on Blind Who Now Has Eyes (Archway Campus, 2022). Lilli's work has been described as "perfectly [capturing] the frenzied fun of the show" by Andrew Houghten at The Reviews Hub and "transforming [the theatre] into different worlds and dreamscapes" by Livvy Perrett at West End Best Friend. Their art celebrating non-binary joy can be found on display at Theatre Deli.

REHEARSAL PHOTOS



SPECIAL THANKS

Gwenan Bain





FROM TEN FEET

Nearing death in a Covid ward and trapped in a series of fractured delusions, ex-Southern Baptist and punk rock fiend, Winona is plunged into splintering and unreliable memories of her life in South Texas.

This new musical explores one woman's religious trauma and the single mistake that may bar her from Salvation.

DATES & TIMES

Friday 18:15

Saturday 21:15

A note from the producer...

Without intending to, this project became a celebration of family. From my mother, who encouraged me to write about her experiences, to my brother, who wrote and composed the show's music, to my Dad, who became a last-minute voice actor for this project and nailed it, this is the power of family.

CREATIVES



ARANSAS HALEY *(she/her)*

PRODUCER/WRITER

Aransas Haley is a New York based producer and writer. She is equally drawn to comedic and dramatic theatre and film that is experimental, abstract, or technically intricate. She is also dedicated to the advancement of women and people of color in entertainment. Her producing credits include The Rocky Horror Picture Show at Southwestern University and Bad Thoughts at FronteraFest 2020.

NATASSIA BUSTAMANTE

(she/her) PERFORMER

Natassia Bustamante is an American/Venezuelan actor who has been lucky enough to escape off the States and train at Mountview. She worked with Prague Shakespeare Company, and can be seen in The Devil Conspiracy (Film), not to mention, numerous Mountview Instagram production photos (Flex). Natassia has loved working with Esalan and Aransas throughout this process, almost as much as writing about herself in third person.



ESALAN GATES *(she/her)*

DIRECTOR

Esalan is a freelance theatre director and writer. She has been given the No Strings Attached award (2023) and was long-listed for Relish Theatre's Regeneration programme (2022). In 2024, she will be directing a tour of 'Violet' (Golden Goose Theatre, 2022), having recently worked on a rehearsed reading of the play at Norwich Theatre Royal. Esalan is currently writing her debut full-length play with the Farnham Maltings. Her other work includes Road S Traveled (Omnibus Theatre, 2022), Sharps (Backstage Theatre, 2022), and The Lovers (Assembly Rooms Theatre, 2021).

JACK HALEY *(he/him)*

Jack Haley is a Houston based musician and lyricist, brother to Aransas Haley, and proud contributor to this project. His first series of studio albums, *Wilt* and *Disappointed*, inspired the music of the show. His specialisation in rock and roll and pop-punk made him an integral member of the team. He currently mixes and masters original music for bands and solo artists in South Texas and across the USA.

COMPOSER AND LYRICIST



MAGGIE YU *(she/her)*

Maggie is a Taiwanese-born musical director and pianist from Hong Kong. She received her training at the Hong Kong Academy for Performing Arts and Mountview, funded by the Hong Kong Scholarship for Excellence Scheme. Maggie is passionate about musical theatre and actively participates in musical productions worldwide. Recent credits include: *Rain Weaver* (Composer, View 2023), *Family and I* (MD, Actors Family (HK)), *EMMA: No One But Herself* (AMD, Mountview), *The Addams Family* (AMD, Mountview), and *Lucky Stiff* (AMD, Hong Kong Academy for Performing Arts). In addition, she is committed to educating the next generation about music and musical theatre.

MUSICAL DIRECTOR

REHEARSAL PHOTOS



SPECIAL THANKS

Kamal Boulema

Shashank Budhia

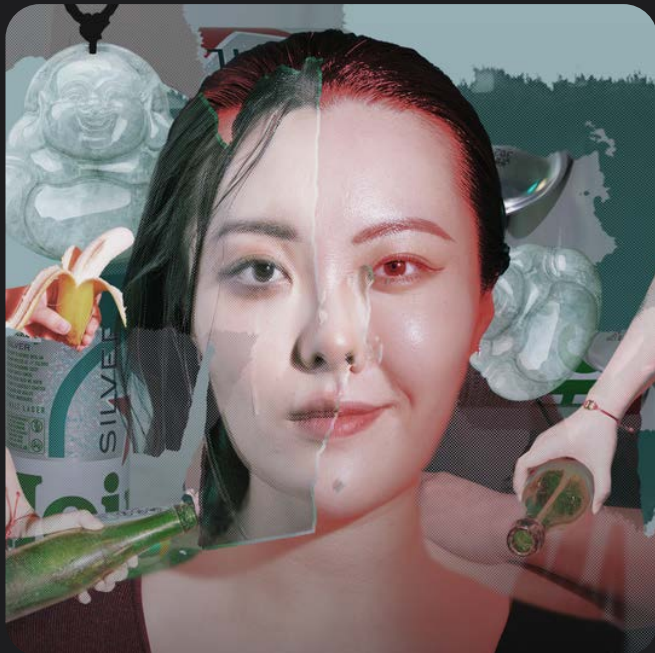
George Craig

Laura Haley

Sean Haley

Joshua Kwan

Melinda Orenge



KISS HER GOODBYE

Is she really my sister? Is she dead? Did she commit suicide? Why did she leave me that message? Who did this to her? Yes, I shall find all the answers. Is this an empathy between sisters or an undeclared secret?

Everything will follow the trajectory of the two sisters' growth in Chinese families, tracing their complex relationship and finding out who is to blame for the tragedy, based on the death of the elder sister.

DATES & TIMES

Tuesday **18:15**
Saturday **11:45**

A note from the producer...

I met Kiss Her Goodbye when it was a concept, finding resonance. It's a story that deserves to be told and heard - and I'm happy to be part of the process of bringing it to life.

CREATIVES



MAVIS LIN *(she/her)*

PRODUCER

Mavis is an Eastern Asian producer now based in London. She is passionate about new writing on East Asian and feminist themes, and has a keen interest in drama, musical theatre and non-traditional live performance forms. She is also interested in supporting new creators and building international connections. Credits include: International Co-producing (online workshop), Made in Dagenham (Mountview), Untitled Chick Flick short film (Mountview), Zero Stop (Shanghai Grand Theatre/online), For Ever Love (Shanghai Pudong Theatre). Training: Mountview, University of Warwick, Fudan University.

YU WANG *(she/her)*

WRITER

Yu Wang was trained at University of Exeter in MA in Creative Writing. She comes from China and shows interest in feminism in the East Asian context. She has worked as a scriptwriter for Hunan TV Super-Vocal in 2018 and has written stage scripts for several events during her university years.



MARIAN LEE *(she/her)*

PERFORMER

Trained: Royal Central School of Speech and Drama
Theatre credit: My Neighbour Totoro (understudy Mei / Puppeteer); The Green God (Chelsea Theatre). While training: promiscuous / cities, The Threepenny Opera, The Castle, The Duchess of Malfi.

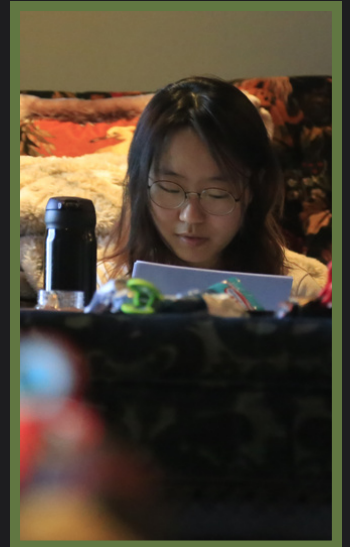
JEN LIM *(she/her)*

DIRECTOR

Jen started directing short plays and musicals both at school and as part of the Hampstead Youth Theatre. She was trained at the Beijing Film Academy and the University of Bristol. She currently works on film and TV sets, whilst writing and directing character driven dramas. Her focus is on stories which highlight societal issues and has so far covered topics such as addiction and mental health in her writing. She was selected for the Google x The Dots' Fast Track 50 programme. Her film *Apocalypse Anytime Now* was funded by the Roundhouse and Ex-Animo foundation and has recently won Best National Film at the Making Waves Film Festival. Her latest films *Discord* (funded by Other Brother Studios) and *My Grief isn't Grief Enough* are currently in post production.



REHEARSAL PHOTOS



SPECIAL THANKS

Yilun Wang

Chenxuan Wang

Yiran Xu

Dayun Zhang

Shiyue Gu

Zihui Lin



RAIN **WEAVER**

Oo only cares about rain weaving... and mastering this new melody that keeps haunting her. When her powers get out of control, she is forced to leave everything behind. While Oo hopes to find a new home in a big water-scarce town, she is quickly met with prejudices and fear. Rejected, she embarks to fish the first star, but when the water stress becomes severe, the people realise that the woman they have scorned is the only one who can help them. Should Oo follow her heart or return to aid?

DATES & TIMES

Tuesday **19:45**
Saturday **15:15**

A note from the producer...

I wanted to explore how a person arriving in a new place finds the balance in upholding their duties, overcomes challenges, and finds their own voice. As part of an interdisciplinary team, I explored these topics in more depth and devised this fantastical story.

CREATIVES



LILLI LEHMANN *(she/they)*

PRODUCER/WRITER

Lilli Lehmann is an international producer and writer based in London. They are interested in finding creative solutions to problems, researching communication models and approaching projects with an open, entrepreneurial mindset, leading to a compassionate and resilient collaborative process. From devised, new writing to interdisciplinary work, and a passion for queer stories, Lilli's productions ask questions, bring people together and celebrate the multi-faceted world we live in. Follow for more: @lilli.lehmann

KELSEY YUHARA *(she/her)*

PERFORMER

Kelsey Yuhara is pioneering a life as an actor, improviser, director, facilitator and producer, internationally. She is a London-based fourth generation Japanese-American who came to study MA Site Specific Performance at Mountview and has since worked with companies and collectives including Teatro Vivo, Dash Arts, Supple Productions (Tim Supple), The Sirrah Sisters, Particle 6 Productions (for the BBC) and Fuel Theatre (The Gretchen Question R&D dir. Melly Still) in various capacities in performance, administration, direction and production. She is turning her focus in 2023 to devised solo theatre performance as an actor with Rain Weaver and another yet untitled project coming soon. @yuharakn



APOSTOLOS ZOGRAFOS *(he/him)*

DIRECTOR

Apostolos Zografos is a theatre director currently based in London. He completed his studies in the MA Text and Performance program (directing pathway) at RADA and Birkbeck. With a background in acting from his involvement in theatre productions in Greece, he received training before transitioning to directing in recent years. He pursued further training in theatre directing through courses (RCSSD, Katie Mitchell). Additionally, he has experience in engineering and computer science. His recent directing work includes What do you want? (2022, RADA), Come to our show (please) (2023, Edinburgh Fringe). Follow him for more: @zograpo

MAGGIE YU *(she/her)*

Maggie Yu is a Taiwanese-born musical director, pianist, and accompanist from Hong Kong. She is passionate about musical theatre and actively participates in musical productions globally. Recent credits include: Family and I (MD, Actors Family (HK)), The Addams Family (AMD, Mountview), and Lucky Stiff (AMD, HKAPA). Maggie graduated from The Hong Kong Academy for Performing Arts as a concert pianist and continues her career as Musical Director at Mountview. She is also keen on educating the next generation about music and musical theatre. Her teaching experiences include West End Workshop (Generation Next, Mountview), Hong Kong Choir of Outstanding Children, and Arts Development Hong Kong. Instagram: [maggieyu_](#)

COMPOSER



YUXUAN LIU *(he/him)*

Yuxuan Liu is a theatre director based in London. He is excited by fun, provocative, inventive, and international theatre experiences. His work ranges from children's theatre and new writing to the reimagining of classic plays.

Recent directing credits: Caligula and the Sea (2023, the Vaults), BoyBi (2022, The Bread & Roses Theatre), It's Not Goodbye, It's Just Goodnight (2022, Bristol Old Vic Weston Studio), Hamlet (2022, The Wardrobe Theatre), Fallen Leaves (2021, Clifftown Theatre).

Keep updated by following me: [@yuxuanliu_1](#)

R&D DIRECTOR

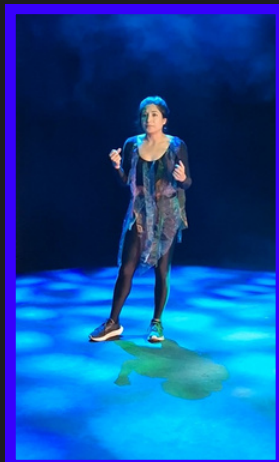
LILI FULLER *(they/them)*

Lili Fuller is a Queer Theatre Designer set out to create Joyful Art. Their design credits include In The Basement (The Glory, 2023), 10/10 Would Trans Again or Having Fun with Gender (The Golden Goose Theatre, 2023), All The Fraudulent Horse Girls (The Glory, 2022/2023), eNBy City (Theatre Deli, 2022) and Remote (The Southwark Playhouse, 2022). They also have experience as Design Assistant on Mountview's production of Disney's The Little Mermaid (The Mack, 2023), Set Build Assistant on the award winning Fort. London 2023 Trans Nude Calendar and Set Dresser on Blind Who Now Has Eyes (Archway Campus, 2022). Lili's work has been described as "perfectly [capturing] the frenzied fun of the show" by Andrew Houghten at The Reviews Hub and "transforming [the theatre] into different worlds and dreamscapes" by Livvy Perrett at West End Best Friend. Their art celebrating non-binary joy can be found on display at Theatre Deli. [@lili.fuller_set.design](#)

DESIGNER



REHEARSAL PHOTOS



SPECIAL THANKS

Colin Blumenau
Guy Chapman
Judith Dimand
Vicki Grace
Alison King
Kumiko Mendl
Natalya Micic
Masaaki Sagara



ROSALINE

Rosaline is mentioned ten times in Romeo and Juliet. She doesn't get any lines. She doesn't appear on the stage. Yet she's the reason that Romeo turns up to that fateful party. Rosaline has lived many lives in many productions – and the line between what's real, and what isn't has become blurred. Just what is Rosaline's role in history's most tragic love story?

DATES & TIMES

Wednesday 19:45

Saturday 18:45

A note from the producer...

Reading this script made me laugh out loud and I adored how it managed to bring a very much over done show into a new light. It brings Shakespeare to Gen Z and Rosaline is the relatable, honest and sassy woman we all love to watch. Watching Grainne bring it to life and Annabel embody Rosaline has been a true joy and honour, I hope you enjoy!

CREATIVES



HANNAH JAYNE *(she/her)*

PRODUCER

Hannah is a London-based producer and theatre maker. She is passionate about new writing, musical theatre and new perspectives on stories already told. She has worked in various roles across the West End from box office to stage door. She is determined and excited to use the skills from her MA and to get her career started. Credits include: *Diary of a Gay Disaster* (The King's Head Theatre, July 2023), *Messengers* (Mountview, June 2023), *BEAM 2023* as Production Assistant (May 2023), *Untitled Chick Flick* short film (Mountview, March 2023), *Romeo and Juliet* (Mountview, December 2023), *Identical – The Parent Trap Musical* with Kenny Wax as rehearsal intern (June 2022). @hannahjayneproductions

IMOGEN USHERWOOD *(she/her)*

WRITER

Originally from the west of England, Imogen Usherwood is a writer based between Hampshire and Oxford. She is currently studying for an MSt in Creative Writing at Oxford University, having graduated from Durham with a BA in English Literature. Her work has been performed at the Edinburgh Fringe, Tristan Bates Theatre and Durham Castle among other venues. She is represented by MMB Creative. Imogenusherwood.wordpress.com



ANNABEL HARB *(she/her)*

PERFORMER

Annabel is a French-Lebanese actor and is a Mountview 2023 BA (hons) Performance - Acting graduate. Theatre credits include: *Blue Stockings* (directed by Joanna Bowman, Mountview), *Boy* (directed by Tom Hughes, Mountview), *Circle Mirror Transformation* (directed by Nicky Allpress, Mountview), *Emilia* (directed by Carol Harvey, Mountview), *Twelfth Night* (directed by Lucy Richardson, Mountview). Film credits include: *Bully* (directed by Tom Collinson, Mountview).

GRAINNE ROBSON *(she/her)*

DIRECTOR

Grainne Robson is a director and theatre-maker from Nottingham based in London. She came to London as an actor and comedy writer, having written for comedians and studied improvisation whilst studying Acting at East15 Drama School and Theatre at Goldsmiths University. She co-created her theatre company Salt Circle Productions in 2021, since then she has directed their productions across London fringe venues and produced bi-monthly new writers nights in Camden.
www.grainnerobson.com



CAMERON KINGSLEY *(he/him)*

COMPOSER

Cameron Kingsley is an actor musician from St Neots and based in London. He came to London after having trained on a 2-year acting foundation course at Stageworks. He is currently in his first year on a 3-year BA (hons) Performance - Actor Musicianship course at Mountview. Just before Mountview, he took the role of Conductor in *The Polar Express* in Cholsey and Wallingford in November/December 2021.

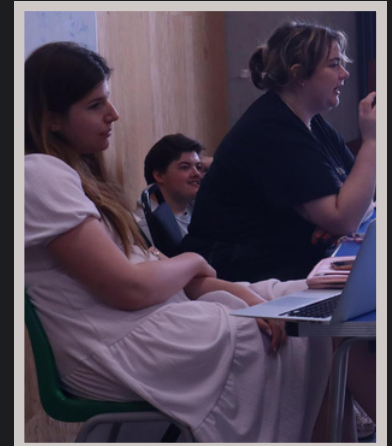
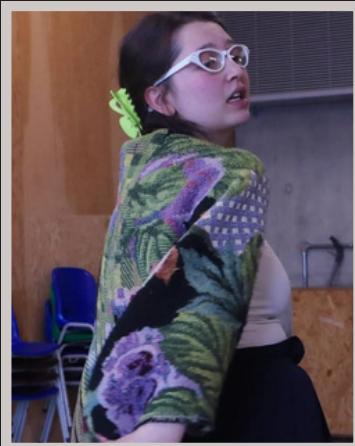
LILI FULLER *(they/them)*

DESIGNER

Lili Fuller is a Queer Theatre Designer set out to create Joyful Art. Their design credits include *In The Basement* (The Glory, 2023), *10/10 Would Trans Again or Having Fun with Gender* (The Golden Goose Theatre, 2023), *All The Fraudulent Horse Girls* (The Glory, 2022/2023), *eNBy City* (Theatre Deli, 2022) and *Remote* (The Southwark Playhouse, 2022). They also have experience as Design Assistant on Mountview's production of Disney's *The Little Mermaid* (The Mack, 2023), Set Build Assistant on the award winning *Fort. London 2023 Trans Nude Calendar* and Set Dresser on *Blind Who Now Has Eyes* (Archway Campus, 2022). Lili's work has been described as "perfectly [capturing] the frenzied fun of the show" by Andrew Houghten at The Reviews Hub and "transforming [the theatre] into different worlds and dreamscapes" by Liwy Perrett at West End Best Friend. Their art celebrating non-binary joy can be found on display at Theatre Deli.



REHEARSAL PHOTOS



SPECIAL THANKS

Sandra Leonard
Ryan Sidney
Mimi Scarlett
Holly Sendall Barker
Amelia Watson



SHEDDING

They say writing it down helps you heal the scars you don't see, but what if you don't know why you're bleeding? It can take writing entire books to find out what your brain can't put into words, and it takes layers of shedded skin to uncover what's underneath.

Shedding is a new show that explores what it means to be disconnected from your body, stuck in the same patterns and habits, and feeling uncomfortable in your own skin.

DATES & TIMES

Thursday 19:45

Saturday 20:00

A note from the producer...

My first time experiencing Shedding was as a 15 minute, brutally honest and moving performance back in 2022. It has been my honour to work with Elle, Tara and Emily to develop this beautiful script into this wonderful new show. We need more theatre that verbalises mental health issues in this completely natural and honest way.

CREATIVES



WILL FIELDHOUSE *(he/him)*

PRODUCER

Will is a London based Producer interested in taking new writing that discusses complex and emotional topics, and presenting it in a digestible format with striking imagery. His background in music and theatre tech often informs the types of projects he is drawn to. Credits include: And Then There Were None (The Annex Theatre), Little Shop of Horrors (Streamed Online), Addams Family (The Mack, Mountview), BEAM 2023 – Production Assistant (Oxford Playhouse) as well as Upstage, The Sound of Love and The Traveller (Short Films).
@will.fieldhouse on Instagram.

ELLE BOGLE *(she/her)*

WRITER

Elle is a London born and based creative. She has put her engineering qualifications to good use by working in multiple theatrical and film productions as a writer, director, producer and actor. A deeply collaborative writer, she wants to show the commonplace and accidental poetry in 'ordinary' life. She is also passionate about exploring the intricate aspects of mental health and queerness, and expressing raw vulnerability in safe spaces. Her writing credits include: Shedding (the original monologue and the new one-person show), Things We Won't Say, Things We Don't Need To Say, 'Blood, The Closed Café, Blindly Dating (multiple online episodes), and The Traveller (short film).



EMILY O'SULLIVAN *(she/her)*

PERFORMER

Emily is from Essex and is graduating with BA (hons) Performance. - Acting. She trained here at Mountview. Additional training includes RADA Shakespeare in Action and National Youth Theatre, of which she is a member. Recent credits include: The Sound of Love, Lola (directed by Eke Chukwu, Mountview), Blue Stockings, Tess Moffat (directed by Joanna Bowman, Mountview), Romeo & Juliet, Celia and the Barnmaid (directed by Dan Herd, Mountview). Emily has recently been working on some filmed work which will come out later this year. She is very excited to be apart of this moving and deeply relatable piece of theatre and hopes that you enjoy it.

TARA NOONAN *(she/her)*

DIRECTOR

Tara is a director and theatre-maker based in South East London. She is preparing to take *Diary of a Gay Disaster*, a new musical comedy, to the King's Head Theatre in July, as well as assistant directing Mountview's *Dance Nation*. Other Mountview credits as assistant director include *Head Over Heels* and *The Winter's Tale*. Prior to Mountview, she spent a year part time at the Birmingham Hippodrome, assistant directing *POPSTARS!* in the Patrick Studio and assisting on in house productions such as Tim Sutton's *To The Streets*. She also directed *Legally Blonde* at the Warwick Arts Centre and assistant directed NYMT's 2022 production of *Ragtime*. She has been a youth theatre teacher and facilitator for various companies for five years across the UK and Ireland.



REHEARSAL PHOTOS



SPECIAL THANKS

Charlotte Connelly

Mika Woods

Janet Fieldhouse

Ian Fieldhouse



STICK IT TO ME

After years of teaching teenagers how to have safe sex, when Sam's third round of IVF fails, the irony is not lost on her. With unprecedented disruptions at school, an obsessive crush on her younger colleague and hormones galore, will Sam's last chance at IVF finally give her what she's been dreaming of, or will she lose herself and her relationship in the process?

DATES & TIMES

Thursday 18:15

Saturday 14:00

A note from the producer...

The reason I chose this piece was a very personal choice. The piece discusses the experiences of motherhood, whereas my lived experience has been absent of a maternal presence. By producing this piece I am able to see multiple perspectives at the same time.

CREATIVES



TIFFANY TAM *(she/her)*

PRODUCER

Tiffany is a London-based producer and theatre maker with a keen interest in addressing contemporary issues. With a background in technical productions, she has honed her skills in the field and gained a comprehensive understanding of the technical aspects of theatre production. She is passionate about creating experimental and engaging plays that challenge audiences and spark conversations around important topics. Credits include: WORTH (Arcola Theatre & Storyhouse, Chester), Vinegar Tom (Mountview) and 11 Million Bits Per Second (short film). Training: Mountview and The Hong Kong Academy for Performing Arts.

FRANCESCA MARIE CLAIRE *(she/her)*

WRITER

Francesca is a working-class writer and performer from East London, her writing experience is diverse with a strong focus on comedy and female-driven stories. She won Best Animated Film at the Portobello Film Festival, and she has been shortlisted for the Funny Women Awards three times. Most recently, she was shortlisted in the David Nobb's Comedy Writing Competition and Curtis Brown's Original Drama TV Series Competition. In 2022, Francesca won Voices from Home.



DANI MOSELEY *(she/her)*

PERFORMER

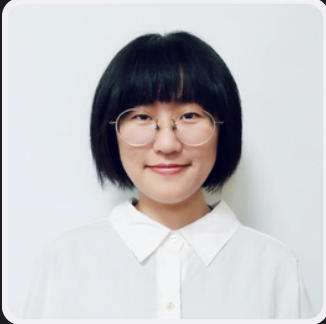
Dani Moseley is an international actress, commissioned playwright & professional voice over artist. Her most recent credits include: Everything I Know About Love (BBC) & David Hare's Straight Line Crazy (The Bridge Theatre).

Dani is set to appear in Dreaming Whilst Black (BBC/A24), Shadow Gambit & the Cursed Crew (Video Game), the second series of Big Boys (Ch4) & Daniel Kaluuya's up & coming feature The Kitchen on Netflix.

RUTH MESTEL *(she/her)*

Ruth Mestel is a secular Jewish artist. She studied at the Royal Birmingham Conservatoire and has worked on projects with the Lyric Hammersmith, Birmingham Rep and the Arena Theatre, amongst others. She was selected to be part of the Young Vic: Introduction to Directing course. Her directing credits include: Yikes (Skin and Blister Theatre), I'd Like To Thank You (Lights Down Productions), 52 Souls (Co-director - Chronic Insanity), Ghost Light (Musical segment- Mairí Ní Ghormáin) and most recently, assistant directing Ordinary People: The Merchant of Venice 1936 (Watford Palace Theatre/RSC/Home Manchester). Ruth's first short play The Mother's Return will be part of Where do we go from Here? (Pentabus Theatre) and has previously received ACE funding to develop her first environmental, co-created play, ECO-BALL. She recently received the BSEEN Rising Star Award 2023 (European Development Fund) and is part of the Pentabus Young Writers Cohort 2023.

DIRECTOR

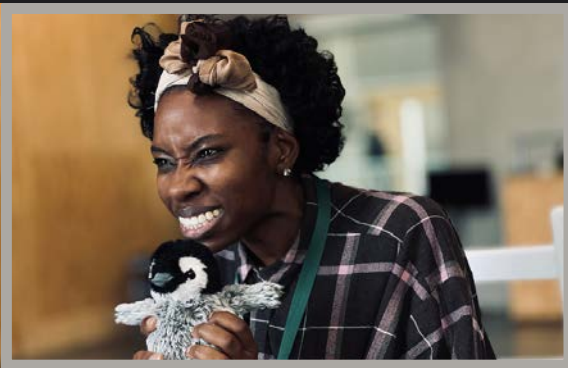


YOYO YAU *(they/them)*

Yoyo Yau graduated from the Hong Kong Academy for Performing Arts, majoring in Sound Design. They have been doing sound design works for various theatre companies including Hong Kong Art Festival, Tai Kwun Hong Kong and Theatre Ronin. Yoyo is also keen on multimedia sound design and has formed Plankton, a multimedia art group. They wish to further explore more possibilities in theatre sound and multimedia arts.

SOUND DESIGNER

REHEARSAL PHOTOS



SPECIAL THANKS

Little Fish Theatre
Ruby Etches

What is Held



Set in a world where both money and opportunities are scarce, 18-year-old Megan, a working-class girl from a small town in Somerset, waits for the results of her pregnancy test. For Megan, there are now only two options - two entirely different lifepaths. The drama is intertwined with comedy to explore Megan's potential futures and what awaits her in each one.

DATES & TIMES

Wednesday 18:15

Saturday 16:30

A note from the producer...

I wrote this play because I heard a young mother I know personally say this wasn't meant to happen, I wasn't meant to be trapped here, and have these life decisions made for me. This inspired me to write the reality about what happens to a lot of young working-class girls around 15 - 20 years old when they take a pregnancy test and what choices they have.

CREATIVES



MICHELLE DABNETT *(she/her)*

PRODUCER/WRITER

Producing credits include: Technology Mockumentary (2021), Can I Speak To A Manager? by Imogen Cook (2021), The Mich Mash Show (2022), and Improv Comedy Workshop with Alex Denley Spencer (2023). Producing and Writing Credits include: Kate Vlogs (2021), Locked In (2022) and Who Let The Plants Grow? (2023). Associate Producer at Golden Goose Theatre 2022/23. Trainee Producer at Creative Youth Charity 2023. Training: Mountview and University of Winchester.

ORIANA BUCKLAND *(she/her)*

PERFORMER

Oriana trained as an actor at the Oxford school of drama and as a pianist at guildhall. Since graduating, acting credits include Speak - at Paines Plough roundabout festival, and her solo show Confession - at the Bread and Roses Theatre. She is a founding member of Multistory productions and currently on Pentabus Theatre's national young writers scheme.



YASMIN GODO *(she/her)*

DIRECTOR

Yasmin Godo is a freelance Director/Writer with a background in Film of several years, spanning credits across Channel 4 Random Acts for her Directorial debut, Short Film - (Un)fit To Work. Televised & Broadcast In celebration of C4's 40th Anniversary in 2022. Since becoming official selection for BAFTA qualifying festivals BFI FLARE & SUPERFEST Disabilities festival 2023.

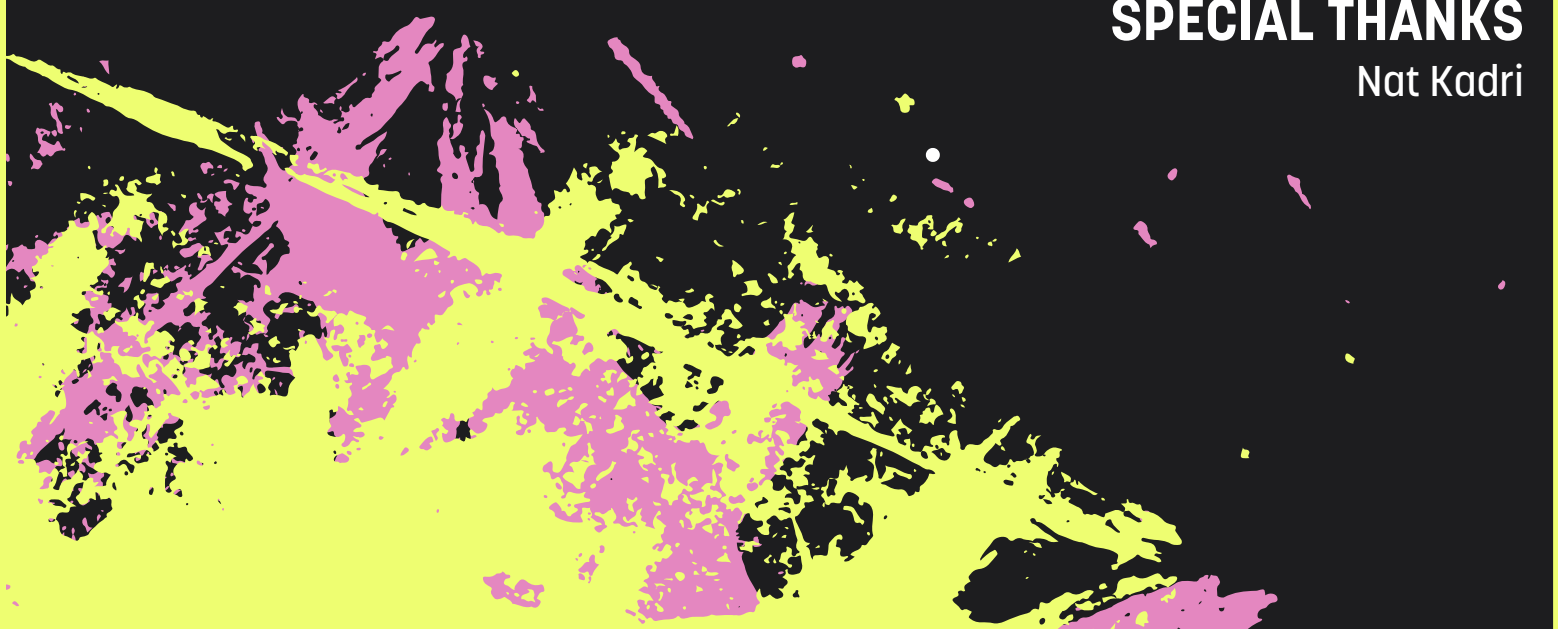
Yasmin shares credits on Debbie Tucker Green's, Royal Court Theatre award winning show Ear For Eye as Assistant Director (2018).

REHEARSAL PHOTOS



SPECIAL THANKS

Nat Kadri



VIEW FESTIVAL EVENTS



THE POWER OF ONE

A Zoom panel of experienced theatre makers addressing fundraising, marketing, and touring solo shows. Available online from July 6.

A panel talk with leading East Asian theatre makers about the art of storytelling. This event is live at Mountview on July 4 at 4:30PM and available on VIEW online from July 6.



MOTHERS AS MAKERS

A podcast on the topic of making theatre as a mother. Available online on July 6.

SATURDAY PROGRAMMING - July 8

3 poets go head-to-head in a poetry slam for the win. Join us in the Mountview Atrium, 12:30PM

BATTLE of the BARDS



Shashank Budhia performs live at Loading Bar Peckham! Sign up at CP22Aransas.Haley@mountview.org.uk or at the door. 8:45- 11PM. Two mics provided, all acts welcome. 18+ only.

VIEW ²⁰²³ SATURDAY

TIMETABLE

KEY: ● Shows ○ Events

Breakfast Deal: 10% off on all food and drinks at SKYLIGHT

10:00 - 10:30 Coffee Morning SKYLIGHT

10:30 12 Backstage Theatre

11:45 Kiss Her Goodbye Backstage Theatre

Lunch Deal: 10% off on all food and drinks at SKYLIGHT

12:30 - 13:30 Battle of the Bards Atrium

14:00 Stick It To Me Backstage Theatre

15:15 Rain Weaver Backstage Theatre

16:30 What is Held Backstage Theatre

Dinner Deal: save 10% on your dinner with Loading Bar

18:45 Rosaline Backstage Theatre

20:00 Shedding Backstage Theatre

20:45 - 21:05 Shashank Budhia Loading Bar

21:15 From Ten Feet Up Backstage Theatre

22:00 - 23:00 Open Mic Night Loading Bar

(Deals apply only for ticket holders of VIEW Festival.)

ALL DAY Scenic Art and Prop Making Display & @Fotolotof & @Quincegarcia Exhibition Atrium



Coffee Morning

Let us kick-start VIEW Saturday together with 10% off on your favourite morning beverage at SKYLIGHT.



12

Mel, Coffee, OCD, 12 times, Marian.
Mel, Coffee, OCD, 12 times, Marian.
Mel, Coffee, OCD, 12 times,



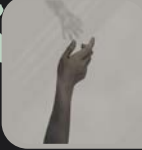
Kiss Her Goodbye

What secrets does her death hide? Follow the younger sister to explore the struggles of female growth in east Asia.



Battle of the Bards

4 poets go head-to-head in a poetry slam for the win. Join us in the Atrium to see 4 poets battling it out for the honour of being crowned VIEW Festival's Chief Bard!



Stick It To Me

A brutally honest and funny production, which explores the realities of an interracial working-class couple trying to have a baby through IVF.



Rain Weaver

A new devised performance about self-worth, trust and finding a home – inspired by an ancient legend.



What is Held

A multiverse of the different life paths 18-year-old working class Megan could take when finding out the results to her pregnancy test.



Sexy Grandpa Collective

Live Music followed by an open mic night. Sing, dance, and enjoy your dinner at Loading Bar.



Rosaline

Wherefore art thou Rosaline? Forget Romeo, it's time for Rosaline to reclaim her role and cement her truth in history's most tragic love story.



Shashank Budhia

A sneak-peak into the music world of From Ten Feet Up – performed by Shashank Budhia.



Shedding

A new show that explores what it means to be disconnected from your body, stuck in the same patterns and habits, and feeling uncomfortable in your own skin.



Open Mic Night

Show off your talent at VIEW Saturday's end of day Open Mic. Register at door. First come, first served.



From Ten Feet Up

Ex-Southern Baptist and punk rock fiend, Winona, weighs her life's merits against the single mistake that may bar her from Salvation in a new pop-punk musical.

VIEW 2023 ONLINE

Find @VIEW 2023 on YouTube or go to the VIEW Online website page to enjoy eight brand-new productions, exclusive digital panels and our podcast.

The content will be available only for 48 hours after the live Festival.

More Information:

<https://www.mountview.org.uk/view-online/>

ONLINE CONTENT

Available from 6 July (12:00) - 10 July (22:30)



East Asian Storytelling in the UK

A panel talk with experienced East Asian theatre makers! Topics of identity, intercultural creation and connection will be covered in the discussion. Panellists include: David K.S. Tse - the founder of Yellow Earth Theatre and Chinese Arts Space; Kumiko Mendl - artistic director and founding member of New Earth Theatre; Jen Lim - writer and director; Tiantian Xie - QMUL doctoral candidate in Theatre and Performance Studies.



The Power of One

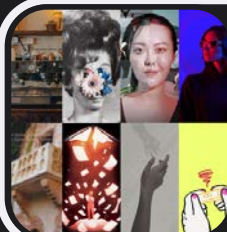
With fringe season upon us, VIEW Festival 2023 offers a Zoom panel of successful theatre makers exploring the key production needs of every solo show. Our panel will examine elements of fundraising, touring, taking shows to festivals, and generating an effective social media presence. This talk is a conversation for actors, directors, writers, producers, and students. Panellists include: Linus Karp - artistic director of Awkward Productions; Doreen Sayegh - producer & general manager of Pemberly Productions; Sofi Berenger - Senior producer at King's Head Theatre and Marisol Spensieri, Performance Maker and Producer.



Podcast: Mothers as Makers

Mothers as Makers is a podcast on the topic of making theatre as a mother. The podcast will include interviews with a series of inspiring mothers who have found a way to enjoy their creative work after having a baby. Francesca Marie Claire - Writer, Performer, Director, Producer; Ella Ashworth - Stage and Tour Manager, Head of Stage Management Training at Mountview; Kumiko Mendl - Artistic Director of New Earth Theatre

Available from 8 July (22:30) - 10 July (22:30)



Filmed Versions of All 8 Shows

The weekday performances are being filmed live, and will be available to watch from July 8 on our VIEW Online page for 48 hours. Can't make it to the festival in person? This is the perfect opportunity to enjoy all the fantastic performances from the comfort of your own home, don't miss out on this incredible opportunity.

MOUNTVIEW
VIEW
FESTIVAL

2023

CREDITS

PRODUCTION MANAGER

Cory Duffill

TECHNICAL STAGE MANAGER

Pip Snow

SENIOR STAGE MANAGER

Naomi Wildridge

LIGHTING DESIGNER / PROGRAMMER

Hayden Camidge

SHOW CALLERS

David Luggar

Melanie Oglesby

EXECUTIVE PRODUCER

Pam Fraser Solomon

FESTIVAL BUSINESS MANAGER

Hannah Leonard

MARKETING MANAGER

Aled Rosser

DIGITAL CONTENT MANAGER

Will Fieldhouse

EVENTS CO-ORDINATOR

Aransas Haley

VIEW ONLINE FESTIVAL DIRECTOR

Mavis Lin

VIEW SATURDAY FESTIVAL DIRECTOR

Lilli Lehmann

CASTING DIRECTOR

Michelle Dabenett

TECHNICAL PRODUCTION CO-ORDINATOR

Tiffany Tam

WITH THANKS TO

MOUNTVIEW HEAD OF MARKETING & COMMUNICATIONS

Lynn Howes

MOUNTVIEW DESIGN & WEBSITE MANAGER

Chi-Zeng Nim

MOUNTVIEW MARKETING OFFICER

Hannah Sellgren

TICKETING & WELCOME TEAM MANAGER

Hannah Partington

OPERATIONS MANAGER

Joel Laule

HEAD OF THEATRE DIRECTING

Peter James CBE

THEATRE DIRECTING ASSOCIATE

Georgie Straight

PRODUCTION PHOTOGRAPHER

Stephen Glass

MOUNTVIEW



Mountview offers professional vocational training in performance and production arts to over 500 Foundation, Undergraduate and Postgraduate students.

In 2018 we moved to a purpose-built facility in south London. Our home features state-of-the-art facilities including two theatres, 23 acting and dance studios, TV and radio suites, practice rooms, meeting rooms and café/bars.

We attract applicants from 88 countries from across the world.

95% of our undergraduate students leave Mountview with agent representation and 97% of our students work in the creative industry within one year of graduation. 70% of all long-running West End shows feature Mountview graduates.

MA CREATIVE PRODUCING

Mountview's MA in Creative Producing has been running since 2015. 100% of graduates have already gone on to work professionally in the UK and internationally, both on their own projects and with companies including Headlong, Theatre Royal Stratford East, Live Theatre in Newcastle, Park Theatre, The Other Palace, the Liverpool Everyman & Playhouse theatres as well as West End and Broadway theatres. VIEW Festival 2023 is the perfect opportunity for the cohort to implement the skills they have learned throughout the year and put them into practice.

