

rent

book, music and lyrics
by **jonathan laron**

musical arrangements
steve skinner

original concept/additional
lyrics **billy aronson**

music supervision
& additional
arrangements
tim weil

dramaturg **lynn thomson**

rent was originally produced in new
york by new york theatre workshop
and on broadway by jeffrey seller,
kevin mccollum, allan s. gordon and
new york theatre workshop

saturday 8 - 15 may 2021
backstage theatre, peckham

directed by **lilac yosiphon** & **simon hardwick**
musical direction by **sarah burrell**
choreography by **simon hardwick**
set and costume design by **cory shipp**
lighting design by **adam king**
sound design by **olly steel**

performed by **mountview's third
year ba (hons) performance -
musical theatre students**
technical roles by **mountview's
theatre production arts
students**

MOUNTVIEW



Photo by RULER

ABOUT MOUNTVIEW

Excellence, Access and Innovation in dramatic training are at the heart of our work. Since 1945, we have trained the very best performers, directors, theatre production artists and producers. We are committed to ensuring our community of over 500 students is representative and that drama training is accessible to all.

Opened in 2018, our home in Peckham was conceived in partnership with Southwark Council as a truly 21st-century drama school and a creative arts hub for all. Our state-of-the-art facilities include the 200-seat Mountview Theatre (made possible by a £1m donation from Sir Cameron Mackintosh), the 80-seat Backstage Theatre, 21 acting/dance studios, TV and radio suites and production workshops. In recognition of their extraordinary work in establishing Mountview's new home and for their commitment to promoting inclusivity, Joint Chief Executives Stephen Jameson and Sarah Preece were presented with Olivier Awards in 2020.

Shortlisted for the RIBA London Regional Awards and Stage Awards Theatre Building of the Year, our new home is not only a vital resource for our students, but also an emerging centre of excellence for accessibility in the arts. Our fully accessible building is home to leading disability arts practitioners Candoco Dance Company amongst a number of other resident professional companies.

Today's students will join a constellation of graduates making their mark on the profession. Actor Noah Thomas (*Everybody's Talking About Jamie*), Actor/Writer Amy Trigg (winner, inaugural Women's Prize for Playwriting 2020), Olivier Award-winning Actor/Writer Giles Terera MBE (*Hamilton*) and Michael Longhurst, Artistic Director of the Donmar Warehouse are just a few of our notable alumni.



THE STAGE

The Backstage Theatre was made possible by the generosity of Lady Susie Sainsbury and the Backstage Trust. It is named in honour of their extraordinary founding gift in support of Mountview's new home. Susie understood and committed to the vision of a new Mountview in Peckham from the outset, and we will always be deeply grateful to her for championing the project and supporting the next generation of performers and theatre makers at Mountview.

**BACKSTAGE
THEATRE**



THE JUDI DENCH FUND

We believe that all young people with the talent and drive to succeed should be supported to pursue lifelong careers in the arts.

The Judi Dench Fund for Access to Drama Training invests in initiatives that break down barriers to drama training, including a nationwide talent scouting network, scholarships, hardship grants and wellbeing and welfare support.

Like charities everywhere, Mountview is facing unprecedented challenges and the Judi Dench Fund has never been more vital. Financial need amongst students is at an all-time high and help at this critical moment could make the difference between a young artist flourishing and being unable to sustain themselves through their training.

If you enjoy this performance, please consider donating what you would have paid for a ticket. Together we can directly alter the prospects of young people at a pivotal moment in their lives.

THANK YOU

Mountview extends a sincere thank you to the individuals and organisations who generously support our work, including the following major donors:

The Mackintosh Foundation
The Backstage Trust
Southwark Council
The Leverhulme Trust
Sir Trevor and Lady Susan Chinn
André and Judith Ptaszynski
Mr Peter Williams and Ms Heather Acton
Andrew Lloyd Webber Foundation
Elaine Paige OBE
Mr Jamie Lonsdale
Sir Clive Jones and Dame Vikki Heywood
Scops Arts Trust
Noël Coward Foundation
Harold Hyam Wingate Foundation

And those who wish to remain anonymous.

To make a gift or find out more, we warmly invite you to visit our [website](#) or [get in touch](#) with the Development team. Thank you.



'Mountview was the only school willing to give someone like me a chance. I was going through the homeless system when I applied and I thought going to drama school was going to be an impossible mission, but then Mountview offered me a place and a full scholarship - it changed my life. Knowing the Judi Dench Fund will help future students in my position is amazing.'

CHARLIE HEPTINSTALL

BA (Hons) Performance - Acting 2020 graduate

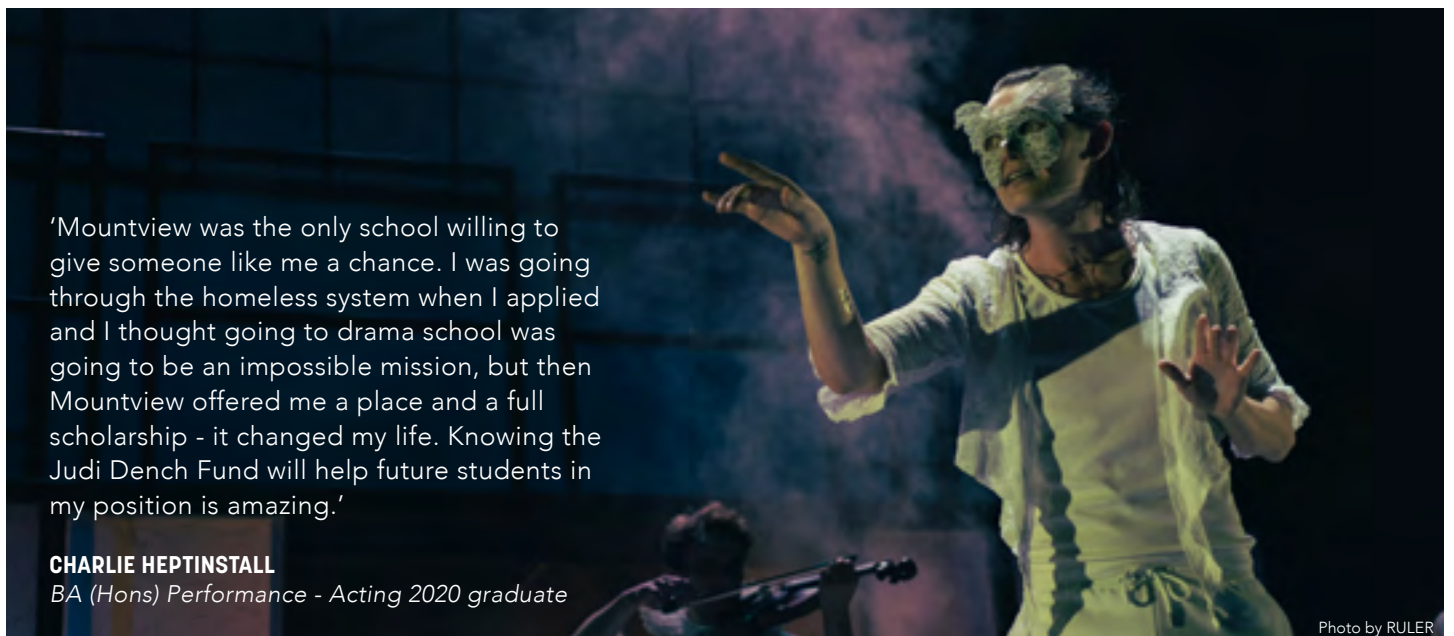


Photo by RULER

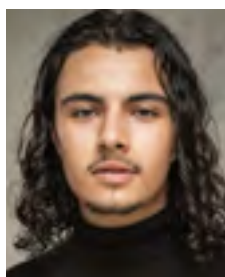
This Tony Award and Pulitzer Prize-winning musical phenomenon tells the story of a group of impoverished young bohemian artists struggling to survive and thrive in Alphabet City in Lower Manhattan's East Village, under the shadow of gentrification and impending eviction. Can they follow their dreams and choose love over fear without selling out?

DURATION 125 MINUTES

CAST

KEY: Uta Cast (U) Buddha Cast (B)

HAROUN
AL JEDDAL



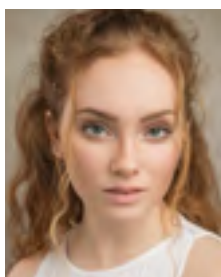
Benny (U) • Ensemble

KATIE
COCHRANE



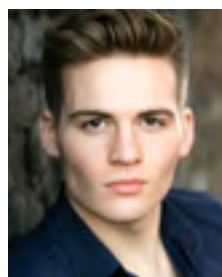
Joanne (U) • Ensemble

LAUREN
CONROY



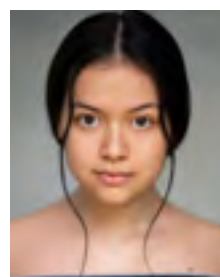
Alexi Darling
(Chorus Leader •
Dance Captain)

TYLER
DAVIS



Mark (B) • Ensemble

SHA
DESSI



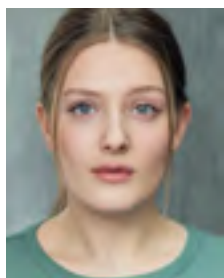
Mimi

JACK
GARDNER



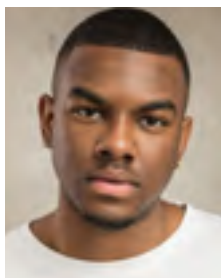
Mark (U) • Ensemble

ELLAN
MANGHAM



Joanne (B) • Ensemble

DOMINIC
NORMAN



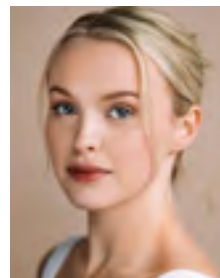
Tom Collins

CAMERON
RHODES



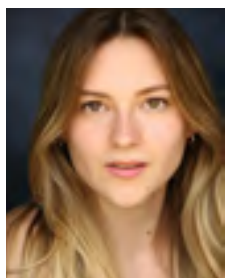
Benny (B) • Ensemble

ALICIA
ROSE



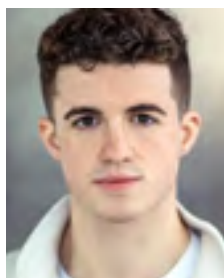
Maureen (U) • Ensemble

MIA
SHELBOURNE



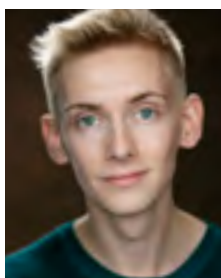
Maureen (B) • Ensemble

CIARAN
SPENCER



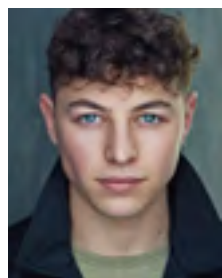
Roger (U) • Ensemble

ALASTAIR
STANLEY



Angel

JACOB
YOUNG



Roger (B) • Ensemble

BAND

MD / KEYS 1 SARAH BURRELL
ASSISTANT MD CATHERINE BENSON

GUITAR 1 EMILY LINDEN
GUITAR 2 / KEYS 2 MARK CROSSLAND

BASS SAM EDGINGTON
KIT MATT BILLUPS

PRODUCTION

CO-DIRECTOR
SIMON HARDWICK

CO-DIRECTOR
LILAC YOSIPHON

MUSICAL DIRECTOR
SARAH BURRELL

SET & COSTUME DESIGNER
CORY SHIPP

LIGHTING DESIGNER
ADAM KING

SOUND DESIGNER
OLLY STEEL

VOICE COACH
STERRE MAIER

DIALECT COACH
CAMERON BERNARD JONES

WARDROBE SUPERVISOR
MEGAN AYRTON

ASSISTANT DIRECTOR
ISSY PAUL *

ASSISTANT MUSICAL DIRECTOR
CATHERINE BENSON **

ASSISTANT LIGHTING DESIGNER
TOM NIGHTINGALE †

PRODUCTION MANAGER
ALYSHA LAVINIÈRE

COMPANY MANAGER
ANGELA RIDDELL

STAGE MANAGER
MELODY WRIGHT †

DEPUTY STAGE MANAGER
HOLLY-SUE BUTLER †

ASSISTANT STAGE MANAGERS
SAM HARCOURT †
LEA BETHMANN †

BOOK COVER
EMILY COTTRELL †

PRODUCTION LX
ALEXANDER HANNAH †

LX NO. 2
CONOR THORNTON †

LX NO. 3
TRISTAN TERESZCZUK †

PRODUCTION SOUND ENGINEER
WAYNE HARRIS

ASSISTANT PRODUCTION SOUND
ENGINEER BILLY HIGHFIELD †

SOUND NO. 1
LIBBIE READ †

SOUND NO. 2
MATT GREED †

SOUND NO. 3
GRACIE ADLINGTON †

LEAD & DEPUTY SCENIC ARTISTS /
PROP MAKERS
AURELIE CLARK
MORWENNA GOODBAN

ASSISTANT SCENIC ARTIST/PROP
MAKER EMMA FROUD

LEAD CARPENTER
TOM BARNETT

DEPUTY LEAD CARPENTER
EMMA HAYWARD

VIDEO TECHNICIAN / OPERATOR
COLIN EVERSDIJK †

* Theatre Directing student
** Musical Direction student
† Theatre Production Arts student
‡ Scenic Art and Prop Making student

THANKS TO

AUTOGRAPH SOUND RECORDING
WHITE LIGHT LTD
MARTIN HARMAN

SIMON HARDWICK *Co-Director*

Director and Choreographer: *Legally Blonde*, *Side Show*, 9 to 5 (Bird College). Choreographer: *Groundhog Day* (Helsinki City Theatre), Lin Manuel-Miranda's *21 Chump Street* (The Courtyard), *Guys and Dolls*, *Brass* (Mountview), *Dick Whittington*, *Aladdin* (Hawth, Crawley). Associate - *Strictly Ballroom*, *Jesus Christ Superstar*, *Drunk*, *The Lorax*, *Jekyll and Hyde* (The Old Vic). As a performer: *Miss Saigon*, *Chicago*, *A Chorus Line*, *Wicked*, *Grease*, *The Who's Tommy*, *High School Musical*, *Footloose*, Elton John & Tim Rice's *Aida*. Workshops include *King Kong* and *Company*.

LILAC YOSIPHON *Co-Director*

Lilac is a freelance director and Artistic Director of Althea Theatre. She is endorsed by Arts Council England as a promising Exceptional Talent in the UK and was a finalist for the JMK Award 2019. Most recently she has been awarded an Unlimited Commission in partnership with Polka Theatre. She has directed and facilitated for Graeae, Mountview and National Youth Theatre. Directing credits include *Heroes* (Vault Festival, nominated for an Origins Award for New York), *The Glass Will Shatter* (Omnibus Theatre/UK tour) and *One Last Thing (For Now)* (Old Red Lion Theatre, nominated for an Off-West-End Award for Best Ensemble).

SARAH BURRELL *Musical Director*

Sarah graduated from the MA Musical Direction course at Mountview in 2016. Credits include: *La Cage Aux Folles*, *Cabaret*, *Jersey Boys* and 9 to 5 (Asst MD, UK tours), *Six* (Dep MD, The Arts Theatre), *Waitress* (Cover Conductor, The Adelphi Theatre), *Be More Chill* (Associate MD, The Other Palace). After this production of *Rent*, she will be MD on the UK tours of *Six* and *Bring it On*.

CORY SHIPP *Set and Costume Designer*

After working as a scenic artist Cory trained at the Royal Welsh College of Music and Drama and now works as a Set and Costume Designer for theatre and performative work. Credits include *The Mikvah Project* (Orange Tree Theatre), *Cyrano de Bergerac* and *Easy Virtue* (The Watermill Theatre), *Mr Burns: A Post-Electric Play* (Mountview), *Another Planet* (The Gramophones Theatre Company), *Hags* (Scratchworks Theatre Company) and most recently Costume Design for *Unfortunate: A Musical Parody* (Fat Rascal Theatre Company).

ADAM KING *Lighting Designer*

Adam originally trained at Mountview and has since gone on to work as Assistant Lighting Designer to Neil Austin on *Harry Potter and the Cursed Child* (Palace Theatre) and *Bend it Like Beckham* (Phoenix Theatre). His own recent credits include: *Stewart Lee - Snowflake/Tornado* (UK tour), *Beyond Therapy* (UK tour), *Royal Ballet School* (Royal Opera House/Opera Holland Park/Linbury Theatre), *Original Death Rabbit the Wasp* (Jermyn Street Theatre), *Jack and the Beanstalk*, *Aladdin* (Harlow Playhouse), *The Nutcracker*, *Peter Pan* and *Beauty and the Beast* (New Theatre Royal Portsmouth).

OLLY STEEL *Sound Designer*

Olly was recently awarded 'Best Sound Design' for *El Medico El Musical*. A world premiere adaptation of the bestselling Noah Gordon novel *The Physician*. Olly has been part of countless major productions spanning five continents and over 50 countries. Productions include: *Romeo and Juliet* (Broadcast production), *Guys and Dolls* (Theatre Marignay, Paris), *Friendsical* (2020 UK tour), *The Stunners' Opera* (world premiere, London), *Strictly Ballroom* (West Yorkshire Playhouse and Toronto), *Disney's Cinderella* (Rossiya Theatre, Moscow) and *Rocky Horror Show* (UK and Australian tours).

WARNING

We don't want to give away any spoilers for a show, but understand that some content may cause distress for audiences. If there are certain themes or content that you would find particularly upsetting, we encourage you to contact us before viewing to find out more about the show - please email boxoffice@mountview.org.uk.

Rent contains strong language and scenes referring to or depicting drug use, serious illness, death and suicide. It includes strobe lighting.

COMING UP NEXT



SIGN UP FOR OUR LATEST NEWS: mountview.org.uk/keep-in-touch



mountview.org.uk    @mountviewldn

UEA University of
East Anglia

TRINITY
COLLEGE LONDON

Southwark
Council

FDS FEDERATION OF
DRAMA SCHOOLS

CDMT
Accredited School

AMTC
ALLIANCE OF MUSICAL THEATRE CONSERVATORIES

President Dame Judi Dench CH DBE

Principal & Artistic Director Stephen Jameson

Executive Director Sarah Preece

Chairman Dame Vikki Heywood CBE

Board of Directors Sir Brendan Barber · Lady Susan Chinn · Laura Gander-Howe · Trevor Jackson · Benjamin Lafayette · Andrew Parker · John Reiss · Cllr Johnson Situ
Dame Rosemary Squire OBE · Giles Terera MBE · Artistic Associates Maria Aberg · Annabel Arden · Paul Arditti · Neil Austin · Alecky Blythe · Paul Clay · Aletta Collins · Lindsey Coulson
Brian Cox CBE · Martin Duncan · David Edelstein · Philip Engleheart · Alasdair Flint · Howard Goodall CBE · Douglas Henshall · Amanda Holden · Terry Johnson · Akram Khan MBE
Kwame Kwei-Armah OBE · Leigh Lawson · Dame Twiggy Lawson · Eddie Marsan · Elaine Paige OBE · Michael Pennington · Tom Piper MBE · Indhu Rubasingham MBE · Liam Steel
Ken Stott · Sarah Travis · Roy Williams OBE · Anton Woodward OBE

Registered Office: 120 Peckham Hill Street, London SE15 5JT · Registered Charity No: 274166 · Incorporated In England No: 01019858