

A large, bold, blue graphic of the letter 'M' is positioned on the left side of the page, extending from the top to the bottom. The 'M' is composed of thick, solid blue lines.

MOUNTVIEW

ACADEMY OF THEATRE ARTS

ANNUAL REPORT
2014/15

CONTENTS

- 3.** WELCOME
- 4.** ACADEMIC PORTFOLIO
- 5.** PRODUCTIONS
- 6.** NEW WORK
- 7.** 70TH ANNIVERSARY
- 8.** QUALITY ASSURANCE
- 8.** EQUALITY & DIVERSITY
- 9.** PRIZES AND AWARDS
- 10.** GRADUATION
- 12.** INTERNATIONAL REACH
- 13.** NATIONAL REACH
- 14.** NATIONAL SCOUTING PROGRAMMES
- 15.** LOCAL ENGAGEMENT
- 17.** SUPPORTERS
- 18.** OUR NEW HOME
- 21.** OUR PRESIDENT, TRUSTEES AND ARTISTIC ASSOCIATES
- 24.** FINANCIAL OVERVIEW 2014/15

70 MOUNTVIEW ACADEMY OF THEATRE ARTS 1945 - 2015

WELCOME

Mountview Academy of Theatre Arts is one of the UK's top five drama schools.

Our vision is for excellence, access and innovation.

Excellence: to produce the next generation of leading actors and creative artists.

Access: to train the most talented people regardless of background or income.

Innovation: to create challenging work in collaboration with the finest directors, writers and composers and to build a new fit-for-purpose theatre and training facility in the heart of Peckham.

Our primary activity is to provide world-class foundation, degree and postgraduate courses for students who wish to work professionally in theatre and its related industries. We currently have 400 students studying on full-time, vocational courses validated by our academic partner the University of East Anglia.

Our students come from all over the UK and across the globe. Each year over 2,500 young people audition for just 104 places on our vocational BA (Hons) courses. Only the most talented get places and this is borne out in our graduate employment statistics. Over 90% of students gained professional

work within a year of graduation. To ensure we are reaching the most brilliant talent irrespective of social background a national scouting network of grass-roots arts organisations identifies young people for whom the cost of auditioning would be prohibitive. We offer free auditions and work with successful candidates to access training bursaries.

2015 marked Mountview's 70th anniversary. Celebrations included founding an annual series of In Conversation events with leading figures in the international theatre industry, launching a new touring programme to the University of East Anglia and the International Shakespeare Festival in Germany and a commemorative anniversary production of Oscar Wilde's *The Importance of Being Earnest* – the first play presented by Mountview in 1945.

The Trustees are immensely proud of what the staff and students at Mountview have achieved this past year, including an 'Outstanding' assessment by Ofsted, and look forward to building on that success.

VIKKI HEYWOOD CBE

Chairman

Mountview Academy of Theatre Arts



ACADEMIC PORTFOLIO

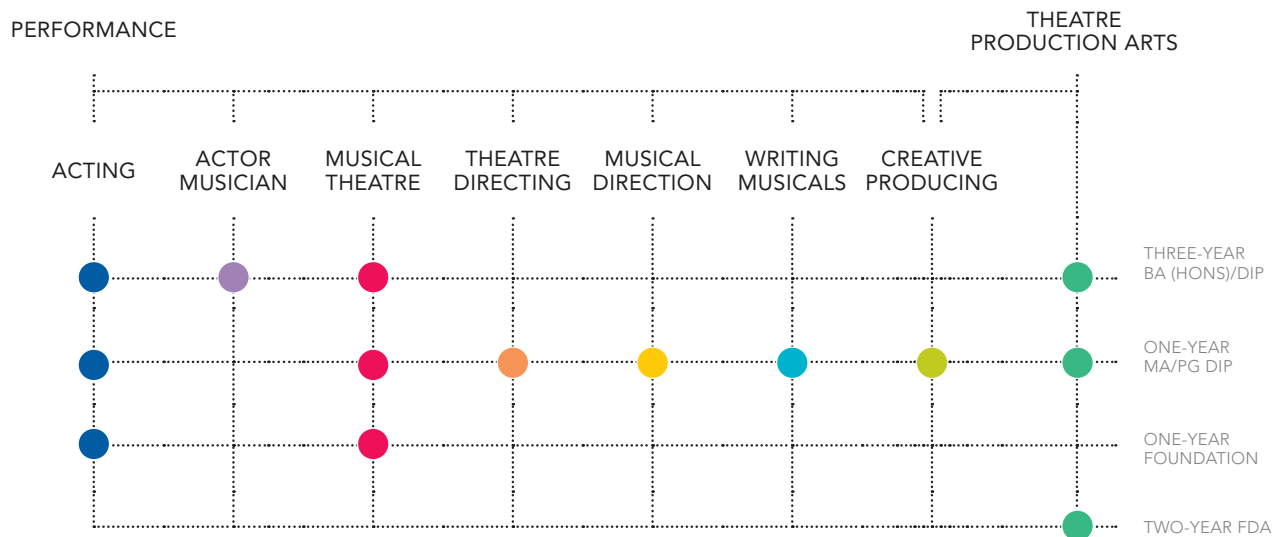
2014/15 was a successful year for Mountview.

Student applications have increased impressively by 37% in past two years. We received over 2,500 applications for just 104 places.

September 2015 saw the launch of three new MA programmes in what is a developing specialist strand designed to offer small cohorts of students an opportunity to study for an MA in their chosen field alongside Mountview's teams of practitioners. The new MAs are in Writing Musicals, Musical Direction and Creative Producing and have attracted a significant number of international applications.

Student achievement rates remain consistently high at Mountview with a significant proportion of degree passes continuing to be in the First Class and Upper Second Class classifications. External Examiners' reports commend the standards achieved by students and the fairness and impartiality of the assessment systems.

The primary courses are:



2
FOUNDATION PROGRAMMES

4
UNDERGRADUATE PROGRAMMES

7
POSTGRADUATE PROGRAMMES

3
NEW MA PROGRAMMES

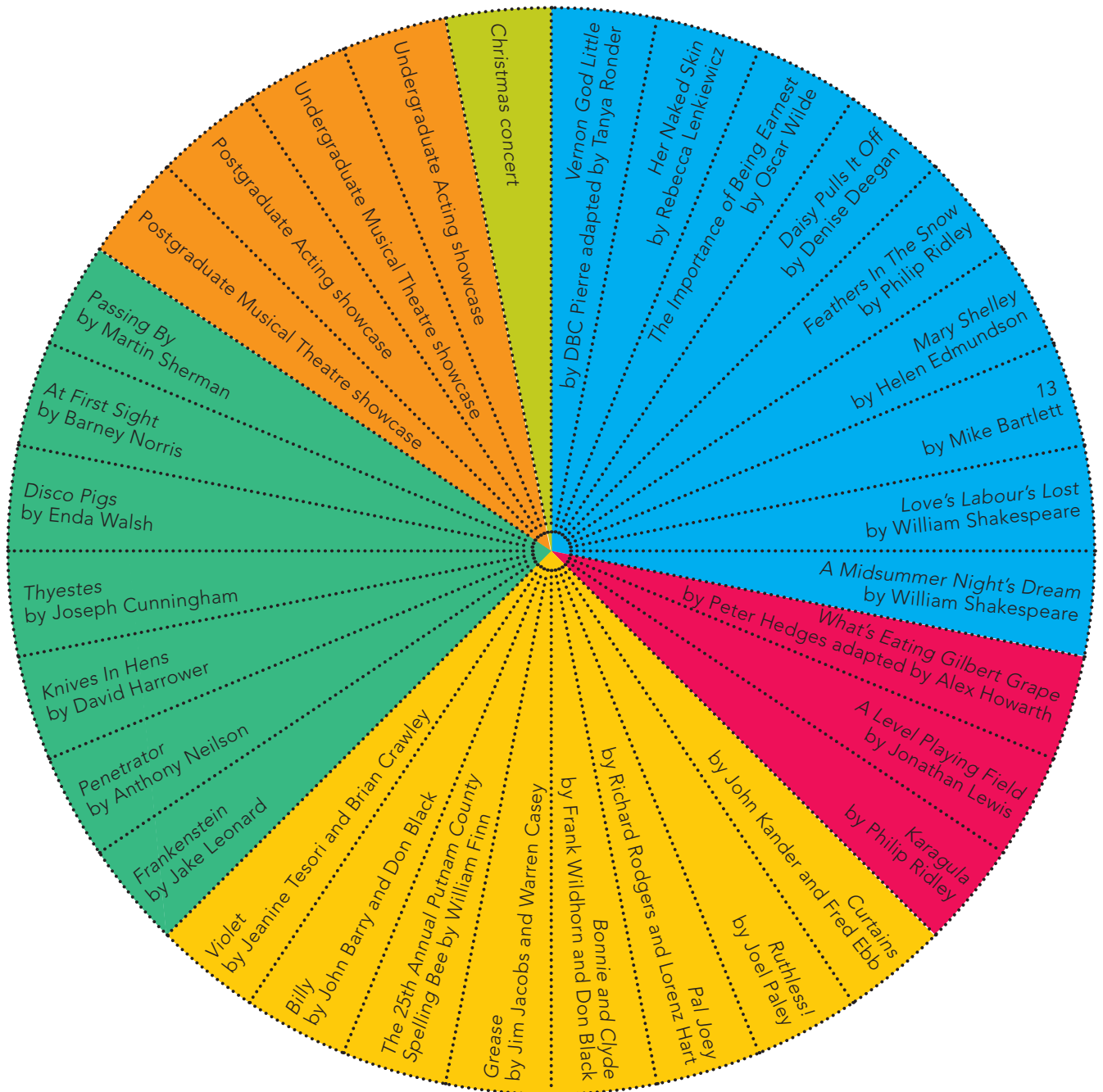
PRODUCTIONS

In 2014/15 we presented 32 productions in venues across London as well as at Further Education colleges across the south east, the University of East Anglia and the International Shakespeare Festival in Germany.

KEY:

PLAY (9) | NEW WRITING (3) | MUSICAL (9) |
 POSTGRADUATE DIRECTORS PRODUCTION (7) |
 PROFESSIONAL SHOWCASE (4) | CONCERT (1)

32
PRODUCTIONS
 IN 14 VENUES
 ACROSS LONDON,
 THE UK AND
 INTERNATIONALLY



NEW WORK



© thisisruler.net



© Robin Savage

Mountview is committed to supporting new writing. We believe it is important to develop the canon of contemporary writing and create work which reflects the diversity of Mountview's students. We work with both established world-class writers and new voices on a range of projects.

In 2014/15 we commissioned and developed the following new work:

Karagula a new play by Philip Ridley

What's Eating Gilbert Grape by Alex Howarth, adapted from the novel by Peter Hedges

A Level Playing Field by Jonathan Lewis which went on to have its professional West End debut later in the year

Lockhart a new musical by Jonathan Butterell and Ashley Robinson

American Jesus a new musical by Jared Zeus and Tamara Harvey

We currently have a new play under commission by Roy Williams OBE with support from Arts Council England.



© thisisruler.net

70TH ANNIVERSARY

Our anniversary year began with a commemorative production of our first ever play: Oscar Wilde's *The Importance of Being Earnest*. Directed by Rebecca Frecknall it was presented at the Bernie Grant Arts Centre in Tottenham.

In partnership with the Hospital Club (a members' club in Covent Garden for the film, media and creative industries) we founded an annual series of In Conversation events, where leading figures of the theatre industry discuss their careers for an audience of students and specially invited guests. Events included:

Dame Judi Dench In Conversation with Sir Richard Eyre
Elaine Paige In Conversation with Mark Shenton
Brian Cox In Conversation with Matt Smith
Howard Goodall In Conversation with Mark Shenton
Sir Richard Eyre In Conversation with Patrick Spottiswoode

We also began two new touring programmes to take our work to a wider audience. We performed *A Level Playing Field* at University of East Anglia in Norwich and took *Love's Labour's Lost*, directed by Mountview's Principal Stephen Jameson, to the International Shakespeare Festival at the Globe Theatre in Germany.

Both productions were sold out. We will be developing these initiatives in 2015/16 with a production of *Jane Eyre* touring to UEA and Further Education colleges across south east England and *Julius Caesar* directed by Polina Kalinina visiting the International Shakespeare Festival.

2
NEW TOURING
PROGRAMMES



© Katherine Leedale

QUALITY ASSURANCE

This year we have passed assessments by our validating bodies Quality Assurance Agency for Higher Education (QAA), HEFCE, the Department for Business, Innovation and Skills (BIS), University of East Anglia and Trinity College London. We have also been judged 'Outstanding' by Ofsted.

OUTSTANDING

EQUALITY & DIVERSITY

Over the course of the last four years we have placed a great deal of emphasis on equality and diversity awareness and training in the organisation.

Our students are actively recruited from a diverse range of backgrounds via new initiatives such as regional and local scouting and nationwide workshops and auditions. According to a report in The Stage (October 2014) Mountview recruits the highest percentage of BAME students of any drama school in the UK with 40% of students of BAME background on our three-year acting programme. We also have the second highest percentage from state secondary schools at 85%. These are statistics that we actively intend to improve over the next few years.

The selection of plays and musicals takes into account this demographic and responds to what is an ever-changing mix of young adults from a wide range of backgrounds. Casting is allocated on the basis of student suitability for role and is irrespective of disability or ethnic origin. Gender balance is considered in the selection of materials to ensure that there are sufficient opportunities for all.

40%
OF STUDENTS
OF BAME
BACKGROUND

85%
FROM STATE
SECONDARY
SCHOOLS



© Jamie Scott-Smith

PRIZES AND AWARDS

2014/15 was a particularly successful year with students winning a wide range of prizes and awards.



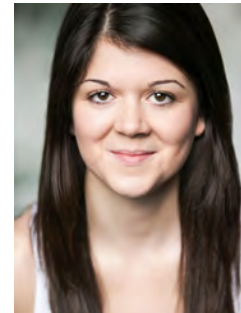
**HELP MUSICIAN
(IAN FLEMING)
AWARD**

MATTHEW
HARRIS
BA Performance
(Musical Theatre)



**LILIAN BAYLIS
AWARD**

CRISTAL
COLE
BA Performance
(Acting)



**SIR JOHN
GIELGUD
BURSARY**

CHLOE
DAVIES
BA Performance
(Acting)



**CARMEN
SILVERA
BURSARY,
PART OF THE
LAURENCE
OLIVIER
BURSARIES**

BILLY IRVING
BA Performance
(Acting)



**YELLOW EARTH
CREATIVE
CONSTELLATIONS
BURSARY FOR
A STUDENT OF
EAST ASIAN
ORIGIN**

MATT BHAR
BA Performance
(Acting)



**ANDREW
LLOYD WEBBER
FOUNDATION
SCHOLARSHIP**

CONSUELA
ROLLE
BA Performance
(Musical Theatre)

DANCE AND DRAMA AWARDS

Dance and Drama Awards (DaDA) are scholarships funded by the Education Funding Agency and are awarded to students who display the most potential to succeed in the profession.

They are means-tested and can offer up to full tuition fees as well as a maintenance grant towards living expenses, depending on household income. They allow the most talented but economically disadvantaged performance students the chance to study and are a vital resource in ensuring social diversity in drama training.

50% OF ACTING

42% OF ACTOR MUSICIAN

42% OF MUSICAL THEATRE

undergraduate students are in receipt of a full or partial DaDA award.

GRADUATION



© Robin Savage

Honorary Graduates Tim Minchin and Dennis Kelly. Paulette Randall and Humphrey Barclay with Gyearbuor Asante Prize winners Michael Bell and Judith Neill.

Our 2015 graduation ceremony was held at the Cambridge Theatre, Covent Garden on the set of the RSC's award-winning production of *Matilda The Musical*.

Honorary Degrees were awarded to the writers of the show Tim Minchin and Dennis Kelly.

Humphrey Barclay and Paulette Randall MBE awarded the Gyearbuor Asante Prize for Acting to Michael Bell and Judith Neill while the Diana Boddington Award was presented to Theatre Production Arts student, Michael Humphries.

Gyearbuor Asante came to England from Ghana in 1967 and trained at Mountview where he distinguished himself as a prize-winning student. He had numerous theatre, film and television appearances to his credit and was perhaps best known for the hugely successful Channel 4 sitcom, *Desmond's*, produced by Humphrey Barclay. The Gyearbuor Asante Prize for Acting was founded on his death in 2000 as a yearly salute to somebody who in the view of the judges is equally likely to make an unforgettable mark on the acting scene.

Diana Boddington enjoyed a hugely successful career as a stage manager, working at the New Theatre, Chichester Festival Theatre and the National Theatre, where she remained until her retirement in 1987. She was the first stage manager to receive an MBE for services to the theatre. Diana enjoyed close links with Mountview and it is a fitting tribute to present an annual award in Diana's name to an outstanding Theatre Production Arts student.

GRADUATE DESTINATIONS

100%
OF MUSICAL THEATRE

Mountview's graduates enjoy incredibly strong employment track records.

100% of the 2014/15 undergraduate Musical Theatre cohort and 76% of the undergraduate Acting cohort had received professional agent representation by graduation. 95% of undergraduate Theatre Production Arts graduates had secured professional work in the industry.

76%
OF ACTING

This level of representation is the highest for Musical Theatre and fifth highest for acting in the UK.

The cohort has already gone on to high-profile work on stage in the West End, across the UK and internationally, as well as to work in TV, film and advertising.

95%
OF THEATRE
PRODUCTION ARTS
UNDERGRADUATES HAD
PROFESSIONAL AGENT
REPRESENTATION OR
SECURED WORK IN
THE INDUSTRY BY
GRADUATION

Highlights include:

Wonder.land (National Theatre)

Future Conditional (Old Vic)

Richard II (Shakespeare's Globe)

Hamlet (RSC)

Cymbeline (RSC)

King Lear (RSC)

Show Boat (Sheffield Crucible/New London Theatre)

Octagon (Arcola Theatre)

Teddy Ferrara (Donmar Warehouse)

Les Misérables (Queen's Theatre)

Book of Mormon (Prince Edward Theatre)

In The Heights (Kings Cross Theatre)

Ushers – The Musical (Arts Theatre)

Back to Blackbrick (Arts Theatre)

Loserville (Union Theatre)

Romeo and Juliet (Young Shakespeare Company)

Carnival Dreams (Fairfield Halls)

Little Shop of Horrors (Theatr Clywd)

Sound of Music (UK tour)

Sister Act (UK tour)

Ghost (international tour)

Peppa Pig (UK tour)

Chitty Chitty Bang Bang (UK tour)

NO 1
FOR PROFESSIONAL
MUSICAL THEATRE
REPRESENTATION
IN THE UK

NO 5
FOR PROFESSIONAL
ACTING
REPRESENTATION
IN THE UK

Mount Pleasant (Sky 1)

Lewis (ITV)

Doctors (BBC)

Holby City (BBC)

Agatha Raisin (Sky 1)

Autopsy (ITV)

Drifters (E4)

Dixie (CBBC)

Mountview's alumni continue to enjoy flourishing careers from the National Theatre and RSC to Hollywood.

INTERNATIONAL REACH

Mountview plays on an international stage.

Our regular programme of Masterclasses features globally renowned practitioners sharing their skills and experiences with our students.

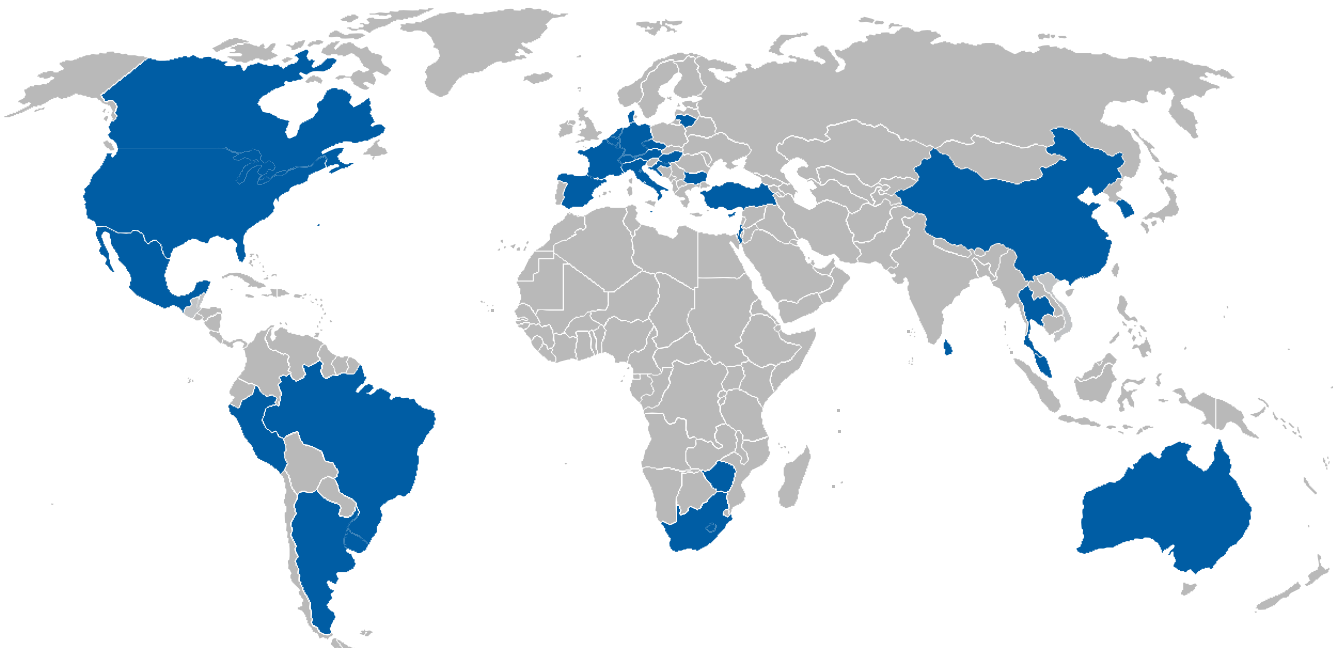
In the past year this has included: Brian Cox CBE, Rosalie Craig, Dame Judi Dench, Isabelle Dupres, Anders Lustgarten, Elaine Paige MBE, Michael Pennington, Jenna Russell, Philip Ridley, Imogen Stubbs and Roy Williams OBE. See p24 for a full list.

Our full-time staff and visiting practitioners work internationally on stages and film sets including Acteer Studio in The Hague, Pinewood Studios, Houston Opera, Théâtre du Châtelet and Cours Florent in Paris and Tisch School of the Arts, New York.

In 2014/15 we received applications from candidates from:

- | | | | |
|-----------|----------------|--------------|-------------|
| Argentina | Croatia | Lithuania | Sri Lanka |
| Australia | Cyprus | Malaysia | Switzerland |
| Austria | Czech Republic | Malta | Thailand |
| Belgium | Denmark | Mexico | Turkey |
| Bermuda | France | Netherlands | USA |
| Brazil | Germany | Peru | Zimbabwe |
| Bulgaria | Hungary | South Africa | |
| Canada | Israel | South Korea | |
| China | Italy | Spain | |

33
COUNTRIES

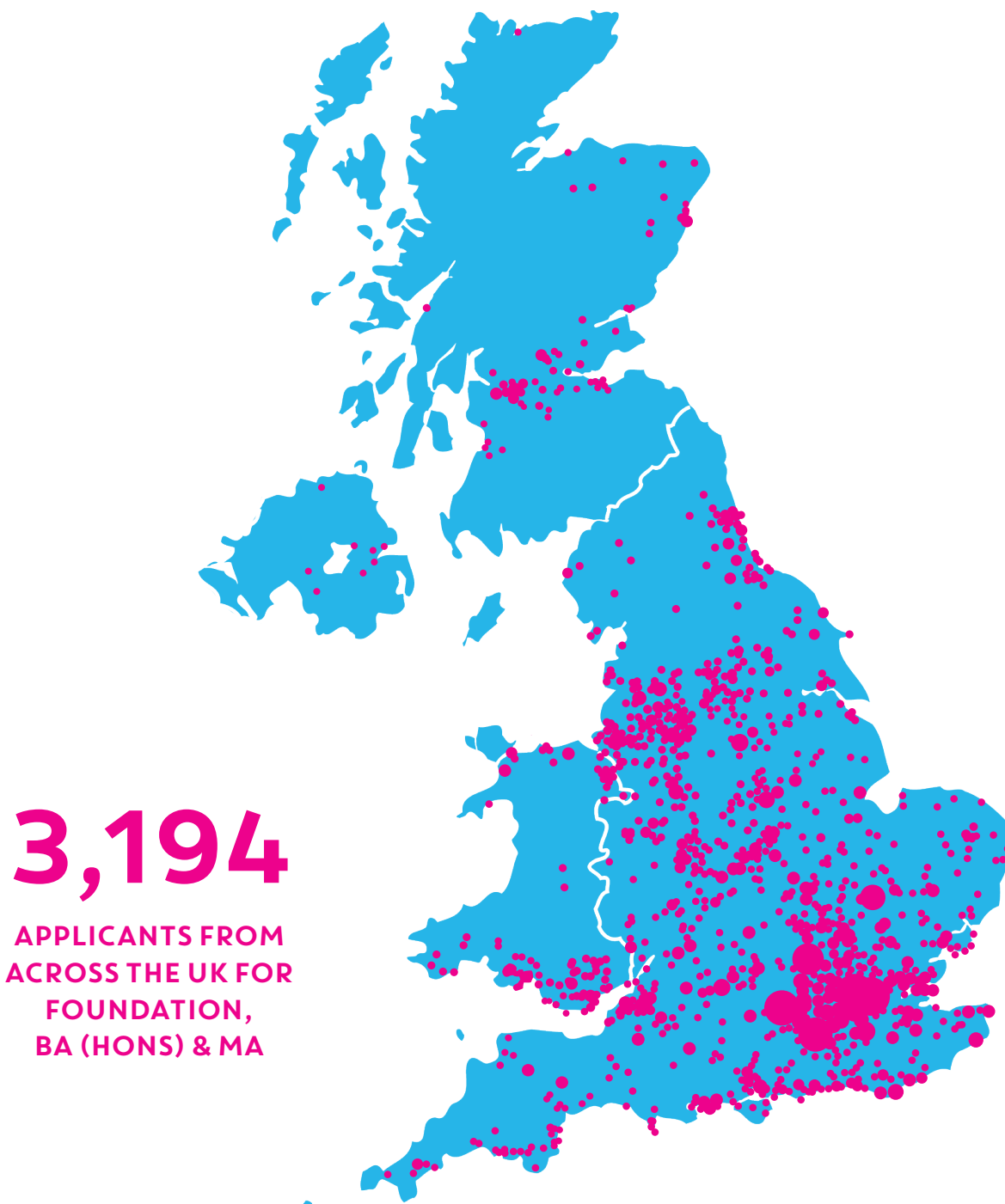


We are developing relationships with All Indian Dance Sport Federation, Beijing Film Academy, Culture Connect Shanghai, Bårder Academy in Norway, Norwegian College of Musical Theatre and Tisch School of the Arts, New York.

NATIONAL REACH

Although we are based in London Mountview is a truly national organisation. Our students represent the brightest talent from across the UK and internationally.

2014/15 auditionees came from the following parts of the British Isles:



NATIONAL SCOUTING PROGRAMMES

To increase access and diversity Mountview set up a nationwide scouting facility in 2014/15. Mountview is working in collaboration with arts organisations throughout the UK who have a track record of working with a culturally, socially and financially diverse range of people at grass-roots level.



64
STUDENTS
PROPOSED

18
RECALLED

5
ACHIEVED
PLACES

16
NEW PARTNERS
NATIONWIDE

Talented young people for whom the cost of auditioning would be a barrier to further study are recommended by these youth groups and receive free auditions at centres across the UK.

In 2014/15 64 candidates were proposed by partners and auditioned, 18 were recalled and five achieved places on our undergraduate courses with bursary support from the Dance and Drama Awards.

In 2015/16 we are expanding the programme to include 16 new partners nationwide.

LOCAL ENGAGEMENT

Mountview's work isn't restricted to the teaching studio, rehearsal room and stage. Each year our students take part in a wide programme of events broadening their experience and introducing a new generation of young people to the benefits of performing arts training.

Our outreach team also carries out a range of programmes to provide an introduction to vocational training, developing performance skills in young people who have little or no access to extra-curricular drama.

Despite receiving no government funding our outreach activity reached 1500 young people in north London who otherwise have little or no access to drama training. Feedback has demonstrated that our outreach programme boosts confidence, develops concentration and provides valuable communication skills for all, whether participants are considering ongoing vocational arts training or not.



© Robert Workman

SHAKESPEARE IN A SUITCASE

Our second year actors took three Shakespeare in a Suitcase productions – one-hour plays with limited staging, props and effects – to local schools. Performances of *Merchant of Venice*, *Much Ado About Nothing* and *Romeo and Juliet* were followed by audience workshops exploring the language and themes of the plays.

PRIMARY SCHOOL READING

Foundation in Musical Theatre students visited Lancastrian Primary School in Tottenham and Alexandra Primary School in Wood Green to hold reading sessions. Students developed their sight-reading skills and 300 children enjoyed hearing their favourite tales.

IMAGINE IF TOTTENHAM HOTSPUR FC

Working with the Tottenham Hotspur Foundation and the Haringey Virtual School, Mountview provided puppetry and improvisation workshops for young people in care in Haringey.



HARINGEY FESTIVAL

An annual arts event for young people, Haringey Festival is a joint initiative led by Mountview and Jacksons Lane Theatre. This year 120 young people from sixteen different Haringey arts organisations performed in the festival at Haringey 6th Form Centre in Tottenham.

‘ENGAGE’ PROGRAMME – YOUNG PEOPLE’S ACTIVITY

725 young people actively participated in regular Saturday classes and summer courses at Mountview. There were 282 funded places supported by the Tottenham Grammar School Foundation in 2014/15. Mountview students interested in working in education receive training and mentoring to become workshop leaders.

1,500
LOCAL YOUNG PEOPLE
TAKE PART



SHAKESPEARE UPLOADED

Supported by the Jack Petchey Foundation and Tottenham Hotspur Foundation, our Shakespeare Uploaded initiative worked in collaboration with local schools and youth programmes. Young people uploaded a Shakespeare speech in any style, original or updated, to Mountview’s YouTube page.



Tottenham Hotspur goalkeeper Michel Vorm and local school children performing Prospero’s monologue from The Tempest.

MOUNTVIEW IN PECKHAM

We are already developing plans for a Peckham-based community outreach programme in preparation for our move to Southwark.

We have been in discussions with Theatre Peckham, Peckham Platform, South London Gallery, University of the Arts London (UAL), London Bubble, Bold Tendencies and other local groups as well as with Southwark Council’s culture team.

SUPPORTERS

In order to provide world-class vocational training to the most talented young people irrespective of social or economic background we offer a series of bursaries and scholarships. We also work with 300 young people each week who otherwise would not have access to creative arts training.

None of this would be possible without the generosity of our supporters:

BURSARIES	ACCESS AND OUTREACH	GIFTS IN KIND	MADE AT MOUNTVIEW (NEW WRITING)	OTHER
Andrew Lloyd Webber Foundation	Ernest Cook Trust	Aria Lights	Arts Council England	CBI (Bristol)
Clive Jones	Jack Petchey Foundation	Ashurst LLP		Private donors who wish to remain anonymous
Diana Boddington Award	The Mercers' Company	Disney's The Lion King		
Gyearbuor Asante Memorial Fund	Tottenham Grammar School Foundation	The h.Club Foundation		
Ian Fleming Award		MAC Cosmetics		
Laurence Olivier Bursary		Stage Electrics		
Lilian Baylis Award				
Lionel Bart Prize				
Luke Morton Prize				
Matthew Martino Benevolent Fund				
Peter Coxhead Memorial Scholarship				
Sir John Gielgud Charitable Trust				
Yellow Earth Creative Constellations Bursary				
Private donors who wish to remain anonymous				

OUR NEW HOME

Mountview's current studios are cramped and not fit for purpose. Commercial rents are becoming increasingly unaffordable.

As a result we have launched a project to build a new home for Mountview, a brand new theatre arts school designed to our specification. A home that we own.

In partnership with Southwark Council we have identified the perfect site in Peckham, south London next to the Stirling Prize-winning library.

Since first conversations in February 2015, we have now agreed outline heads of terms, we have approval from Southwark's cabinet, we have agreed a financing deal, have met with planners about our massing proposals and have undertaken public consultation.

We are planning a 9,500 m² building with a 200-seat public theatre, 80-seat studio theatre, two further black box performance studios, 19 rehearsal studios (seven with sprung dancefloors), two TV studios, a radio suite, music practice rooms, tutorial and meeting rooms, a theatre production facility and commercial spaces.

There will also be a public foyer with café/bars, meeting rooms and co-working space.

The building will retain its primary focus as a world-class vocational academy of excellence. Out of academic hours it will become a centre for professional development and the community.

Our business model sees us increase full- and part-time student numbers to over 500. We anticipate an additional 600 members of the public will use the building for classes, skills development, meetings and other community activity during evenings, weekends and school holidays.

Mountview is the only major UK drama school not to have its own theatre. A public theatre will provide opportunities for apprenticeships and training and will enable us to deliver our world-class repertoire while opening our doors to the local community of Peckham and beyond.

The total cost for the building will be met through a finance package and fundraising from philanthropic sources.

We are currently in the 'quiet' phase of fundraising, developing applications and income sources. The more funds we raise the more opportunities there will be to extend our community offer and provide for services outside our core business.

**IN THE HEART
OF PECKHAM**

9,500 M²

**200-SEAT
MAIN AUDITORIUM**

3

**BLACK BOX
PERFORMANCE
STUDIOS**

19

**REHEARSAL
STUDIOS**

14

**SINGING
PRACTICE ROOMS**

2

TV STUDIOS

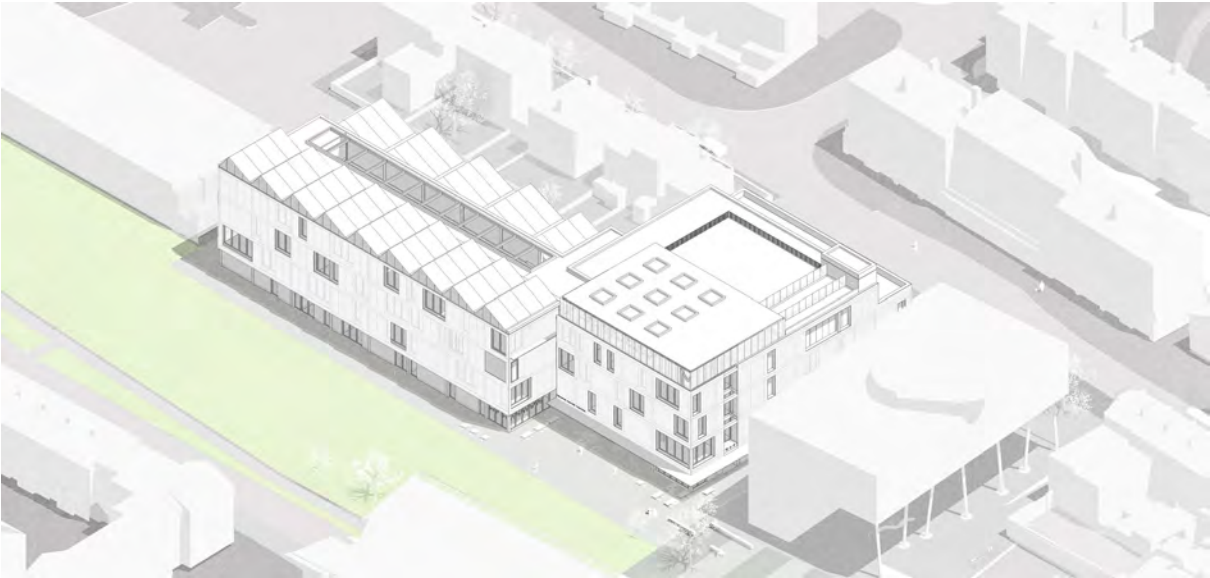
1

RADIO SUITE

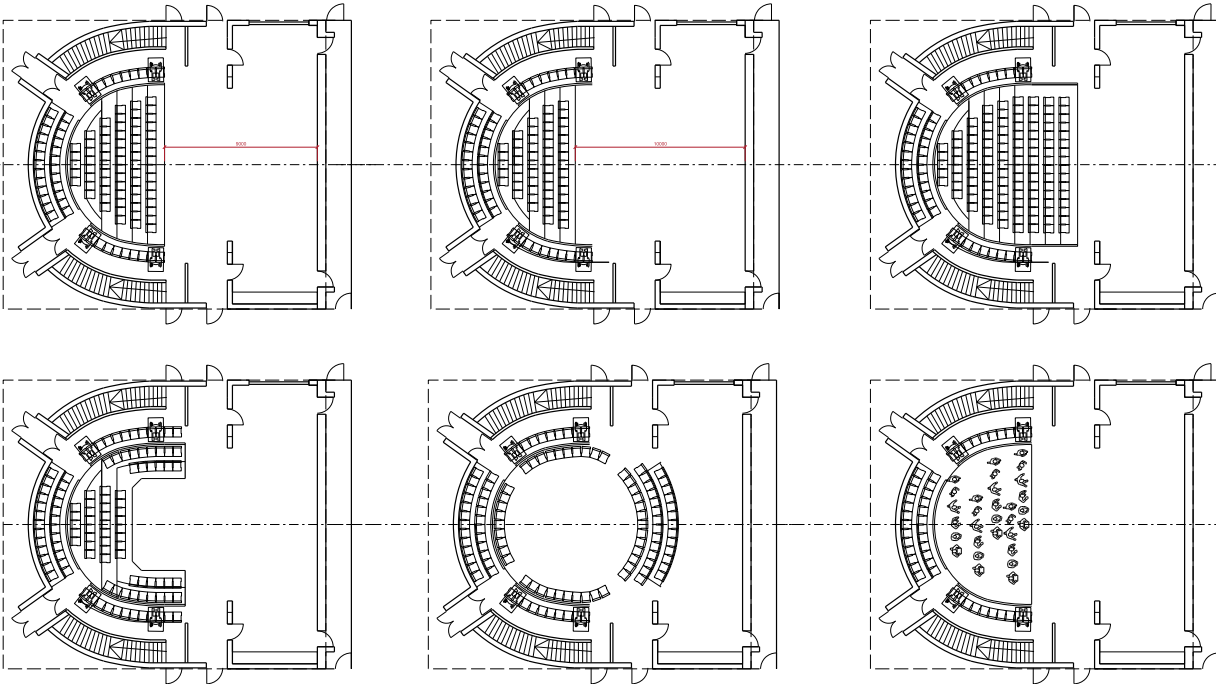
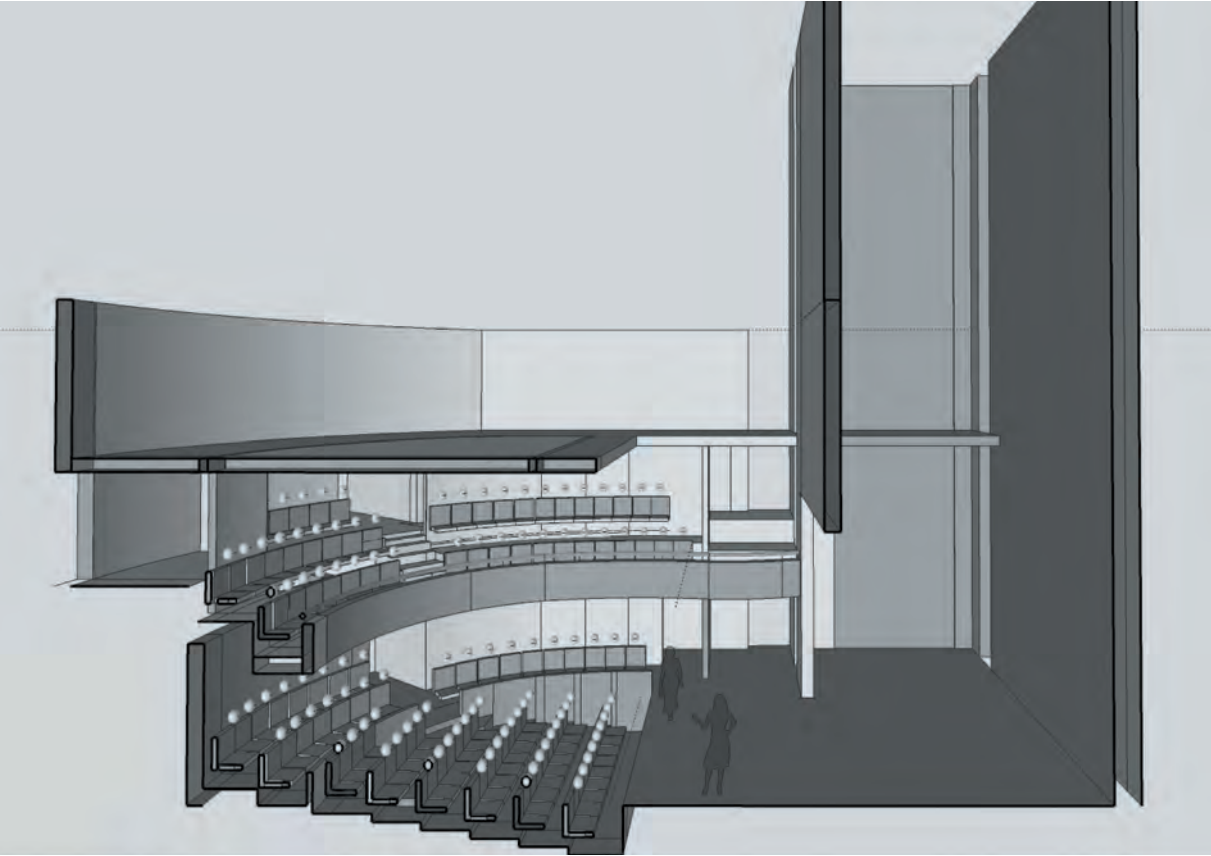
1,200+

**STUDENTS AND
VISITORS USING
THE BUILDING
EACH WEEK**

PROPOSED BUILDING VISUALS



PROPOSED STAGE PLANS



OUR PRESIDENT, TRUSTEES AND ARTISTIC ASSOCIATES

Mountview is led by a diverse and experienced Board of Trustees. The Academy's creative work and training is supported by a range of leading figures from theatre and its related industries.

PRESIDENT

TRUSTEES



1 DAME JUDI DENCH CH, DBE
President

Dame Judi is one of the UK's most respected and best-loved actors. She made her professional debut with the Old Vic Company in 1957 and has gone on to win 10 BAFTAs, six Olivier Awards, two Screen Actors Guild Awards, two Golden Globes, an Academy Award and a Tony Award. She has received the BAFTA Fellowship, is a Fellow of the Royal Society of Arts (FRSA) and in 2011 received a Fellowship from the British Film Institute (BFI).

Dame Judi has been President of Mountview Academy of Theatre Arts since 2005.



2 VIKKI HEYWOOD CBE
Chairman

Vikki was Executive Director of the Royal Shakespeare Company (2003-12) and Joint Chief Executive of the Royal Court Theatre (1996-2001).

She was a Board member of London 2012 Cultural Olympiad and is Chairman of the RSA and 14-18 NOW, the First World War centenary art commissions.

Vikki originally trained as a stage manager at Central School of Speech and Drama. She was awarded an Honorary Doctor of Letters by the University of Birmingham in 2009 and in 2012 received a CBE for services to drama.



3 TONY AGEH OBE

Tony Ageh has held various roles at the BBC since 2002. As Controller, Internet he was responsible for the creation and delivery of the BBC iPlayer. He is currently Controller, Archive Development, delivering the BBC's strategy for making the programme archive more available and developing the Digital Public Space.

At Guardian Newspapers he devised their weekly magazine *The Guide*, and led the Guardian's move online, making it the first UK paper with an internet presence.

4 SIR BRENDAN BARBER

Sir Brendan was the General Secretary of the TUC from 2003-12 during which time he also served on the Court of Directors of the Bank of England.

In 2014 he was appointed Chairman of the Advisory Conciliation and Arbitration Service (ACAS). He also serves as the Deputy Chairman of the Banking Standards Board, on the Board of Transport for London and on the Council of City University.

He is a Visiting Fellow at the Saïd Business School and Nuffield College, Oxford. In 2007 he received an Honorary Doctorate from City University. Sir Brendan was knighted in the 2013 Birthday Honours for services to employment relations.

5 DAME COLETTE BOWE

Dame Colette Bowe has worked in the City, in regulation and in Whitehall.

She is chairman of the Banking Standards Board and the Associated Board of the Royal Schools of Music.

She serves on the boards of the UK Statistics Authority, the Nuffield Foundation and the Department for Transport. She is a Visiting Fellow of Nuffield College, Oxford.

She has been chairman of Electra Private Equity plc and of Ofcom. She was the founding chairman of the telecoms Ombudsman Service and of the Ofcom Consumer Panel, and chaired the Council of Queen Mary, University of London

6 IBINABO JACK

Ibinabo is the graduate representative on the Board having graduated from Mountview in 2009 with a first class degree in musical theatre.

Theatre credits include *Pilar* in the original London cast of *Legally Blonde: The Musical* (Savoy Theatre), *Olivia* in the original London cast of *The Color Purple* (Menier Chocolate Factory), *Porgy & Bess* for Royal Danish Theatre and *Little Shop of Horrors* at Manchester Royal Exchange.

7 ANDREW PARKER

Andrew was Director of Finance and Administration at the Royal Shakespeare Company (2003-12). Prior to this he was Finance Director (International Division) then Group Financial Controller at Oxford University Press over a ten year period.

In 2013 Andrew was appointed Bursar of Somerville College, Oxford University, responsible for finance, HR, estates, accommodation and operations.

8 PAUL ROBERTS OBE

Paul was Director of Education in Nottingham and led the Government intervention in Haringey Council. He was a director of Capita Strategic Education Services before joining the Improvement and Development Agency (IDeA) for local government as Director of Strategy and subsequently Managing Director.

Paul co-authored the DfES/DCMS report "Nurturing Creativity in Young People" and is Chair of the trustees for Creativity, Culture and Education. Paul was awarded an OBE in 2008 for services to education and the creative industries.

9 INDHU RUBASINGHAM

Indhu is Artistic Director of the Tricycle Theatre where her work includes *A Wolf in Snakeskin Shoes*, *The House That Will Not Stand*, *Red Velvet* (Tricycle/St Ann's Warehouse New York, Evening Standard Award and Critics' Circle Award) and *Handbagged* (Tricycle/West End, Olivier Award for Outstanding Achievement in an Affiliate Theatre). Indhu has directed at the Royal Court, Almeida Theatre, Hampstead Theatre and National Theatre.

In 2012 Indhu was awarded the Arts & Culture Award at the Asian Women of Achievement Awards for astounding achievements in theatre.

10 PATRICK SPOTTISWOODE

Patrick joined Shakespeare's Globe in 1984 and became Founding Director, Globe Education in 1989. Globe Education now welcomes over 100,000 people a year for workshops, projects, events and courses.

In 2000 he established the first King's/Globe MA in Shakespeare Studies and the annual Sam Wanamaker Festival. Patrick has co-directed academic conferences at the Globe, in Italy and the USA. In 2011 he was awarded an Honorary PhD by Warwick University and an Honorary Fellowship from King's College London. He is currently the President of the Shakespeare Theatre Association of America.

11 HAMBLE WALLACE

Hamble is a senior fundraiser with a background in performance, currently Acting Head of Major Gifts and Campaigns at the National Theatre.

Her career as a fundraiser started at LAMDA and Hamble has held senior fundraising positions at the Royal Shakespeare Company (part of the team that completed the £112.8m campaign to transform its Stratford home) and Sadler's Wells, where she was Head of Development. Hamble is an alumna of the American Express Leadership Academy for third sector leaders.

12 VINCENT WANG

A founder member and senior director of Stanhope Properties plc, Vincent has since been involved as an entrepreneur and consultant in many arts projects, including the realisation of the Sainsbury Wing of National Gallery and the early stages of the redevelopment of the Royal Opera House, Covent Garden.

Vincent was Chair of Hampstead Theatre (2001-04) and recently managed a major capital development project for the Donmar Warehouse.

ARTISTIC ASSOCIATES

Mountview's Artistic Associates are a collection of actors, directors, composers, writers and production artists who support Mountview's work and creative vision. Many originally trained at Mountview.

They regularly work with students by giving masterclasses, supporting performances or developing new work.

Maria Aberg <i>Director</i>	Amanda Holden <i>Actor and presenter</i>
Annabel Arden <i>Actor and director</i>	Stephen Jeffrey <i>Playwright</i>
Paul Arditti <i>Sound designer</i>	Terry Johnson <i>Director and playwright</i>
Neil Austin <i>Lighting designer</i>	Kwame Kwei-Armah OBE <i>Actor, playwright and director</i>
Alecky Blythe <i>Playwright</i>	Twiggy Lawson <i>Model and actor</i>
Paul Clay <i>Producer</i>	Eddie Marsan <i>Actor</i>
Lindsey Coulson <i>Actor</i>	Elaine Paige OBE <i>Actor</i>
Brian Cox CBE <i>Actor</i>	Michael Pennington <i>Actor</i>
David Edelstein <i>Theatre mechanics producer</i>	Sarah Travis <i>Orchestrator and musical supervisor</i>
Howard Goodall CBE <i>Composer</i>	Roy Williams OBE <i>Playwright</i>
Douglas Henshall <i>Actor</i>	Anton Woodward OBE <i>Animatronics designer</i>

RECENT GUEST ARTISTS

Mike Alfreds	Sir Richard Eyre	Antony Lau	Mark Ravenhill
Analogue	Michael Fentiman	Darren Lawrence	Nadine Rennie
Julie Atherton	Rebecca Frecknall	Caroline Leslie	Philip Ridley
Max Barton	Jimmy Grimes	Nigel Lillie	Jenna Russell
Robert Bathurst	Tamara Harvey	Tim Luscombe	Matt Ryan
Hedda Beeby	Joanne Harris	Anders Lustgarten	Simon Scardifield
Ned Bennet	Katie Henry	Steve Marmion	Showstoppers
Jonathan Butterell	Jim Henson	James McConnell	Ed Stambollouian
Marina Caldarone	Kit Hesketh-Harvey	Mischief Theatre	Imogen Stubbs
Richard Cant	Kelly Hunter	Stuart Morley	Jessica Swale
Paul Clarkson	Nick Hutchison	Supple Nam	Danielle Tarento
Brian Cox CBE	Trevor Jackson	Deborah Paige	Sarah Travis
Rosalie Craig	Andrew Jarvis	Elaine Paige OBE	Barnaby Welch
Stephen Crockett	Jimmy Jewell	Michael Pennington	Charlotte Westenra
Dame Judi Dench	Max Key	Perfect Pitch	Jen Whyte
Stella Duffy	Russell Labey	Peter Polycarpou	Roy Williams OBE
Isabelle Dupres	Bernie Lafontaine	James Powell	Jared Zeus

DEVELOPMENT ADVISORY BOARD

Mountview's Development Advisory Board (DAB) was founded in 2014 to help secure philanthropic donations towards Mountview's revenue and capital fundraising targets.

The DAB provides independent advice and advocacy to the Executive team. It is also tasked with helping raise our profile and introducing our work to influential networkers who can make a significant contribution to the progress of our development programme.

Sir Brendan Barber	Vikki Heywood CBE
Jayne Barr	Emily Morris
Michael Berg	Liz Sich
Annie Fossey	Hamble Wallace (Acting Chair)

FINANCIAL OVERVIEW 2014/15

2014/15 was a year of solid financial performance for Mountview.

Total income for the year was £5,175,121, an increase of 10% on the previous year. This increase was principally driven by expansion of our postgraduate programmes, together with stable income from all other academic programmes. 95% of our income is generated from course fees.

Total expenditure for the year, excluding depreciation charges, was £5,090,739, also an increase of 10% on the previous year. Rent costs for our Wood Green site have continued to rise significantly, which, together with additional accommodation needs for our increased academic programme, account for the majority of this increase in our cost base.

In 2015/16 we have budgeted for total income and expenditure to remain broadly constant in comparison to 2014/15, resulting in a small projected surplus on unrestricted funds for the year of £4,643.

INCOME 2014/15

65% Undergraduate fees

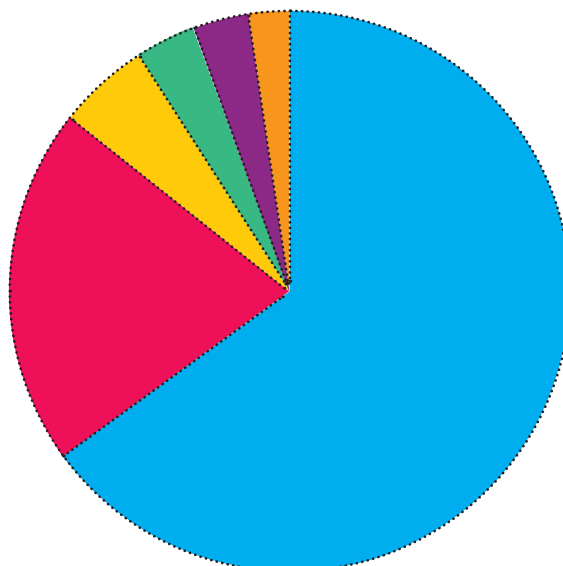
21% Postgraduate fees

5% Foundation fees

4% Short courses fees

3% Other indirect income

2% Audition fees



EXPENDITURE 2014/15

39% Teaching costs

15% Rent & service charge

12% Production costs

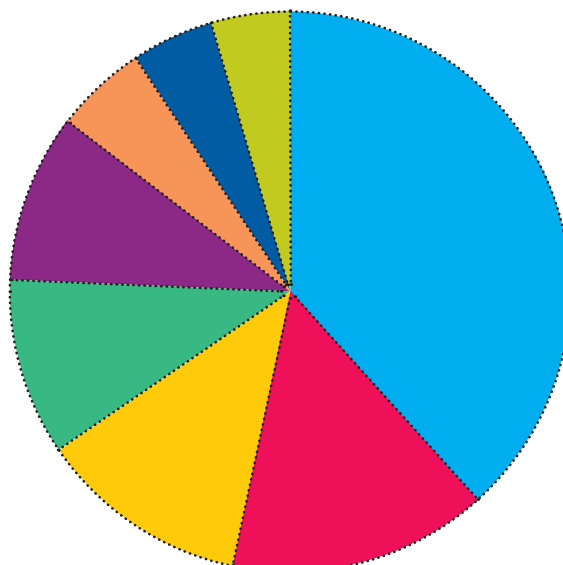
10% Central administration & IT

10% Overheads & other site costs

5% Academic

5% Teaching overheads

4% Marketing and promotion



FINANCIAL OVERVIEW 2014/15

	2013/14	2014/15
DIRECT INCOME	£	£
Undergraduate Fees	3,482,928	3,364,510
Foundation Fees	106,800	266,551
Postgraduate Fees	738,920	1,067,325
Short Course Fees	176,922	194,820
LESS: Provision for Leavers	-	-
Total Direct Income	4,505,570	4,893,206

INDIRECT INCOME	£	£
Fundraising Income	507	8,428
Audition fees	91,365	115,022
Box Office Income	31,906	46,133
DaDA Admin Fee	30,000	57,773
Bank Interest	17,158	21,112
Misc/Other Income	33,738	27,947
Canteen Franchise	5,500	5,500
Total Indirect Income	210,174	281,915

GRAND TOTAL INCOME	4,715,744	5,175,121
---------------------------	------------------	------------------

DIRECT EXPENDITURE	£	£
Teaching Costs	1,906,170	1,967,195
Production Costs	594,663	678,780
Production Tax Credit	-	(73,877)
Total Direct Expenditure	2,500,833	2,572,098

Gross Contribution	2,214,911	2,603,023
Teaching Overheads	256,351	237,590
Net Contribution	1,958,560	2,365,433

INDIRECT EXPENDITURE	£	£
Rent & Service Charge	475,477	768,049
Overheads & Admin	471,552	497,827
Central Admin & IT	528,368	516,617
Academic	177,805	269,990
Marketing and Promotion	237,665	228,568
Contingency	-	-
Total Indirect Expenditure	1,890,867	2,281,051

TOTAL EXPENDITURE	4,648,051	5,090,739
--------------------------	------------------	------------------

Surplus before Depreciation	67,693	84,382
Depreciation	(15,607)	(33,454)
RETAINED SURPLUS (UNRESTRICTED FUNDS)	52,086	50,928

UNRESTRICTED FUNDS BROUGHT FORWARD	538,300	590,386
UNRESTRICTED FUNDS CARRIED FORWARD	590,386	641,314

© 2016 Mountview Academy of Theatre Arts
Kingfisher Place, Clarendon Road, London N22 6XF
020 8881 2201 · enquiries@mountview.org.uk
mountview.org.uk · @mountviewLDN
Registered Charity No: 274166 · Incorporated in England No: 01019858

70 **MOUNTVIEW**
ACADEMY OF THEATRE ARTS
1945 - 2015